

Anti-FAP antibody (STJ99634)

STJ99634

GENERAL INFORMATION

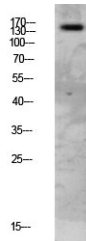
Product Type	Primary antibodies
Short Description	Rabbit polyclonal antibody anti-Prolyl Endopeptidase Fap is suitable for use in Western Blot and ELISA research applications.
Applications	WB, ELISA
Host/Source	Rabbit
Reactivity	Human, Mouse, Rat

PRODUCT PROPERTIES

Clonality	Polyclonal
Clone ID	
Concentration	1 mg/mL
Conjugation	Unconjugated
Purification	The antibody was affinity-purified from rabbit anti-serum by affinity-chromatography.
Dilution Range	WB 1:500-2000 ELISA 1:10000-20000
Formulation	PBS, 50% Glycerol, 0.5% BSA and 0.02% Sodium Azide.
Isotype	IgG
Storage Instruction	Store at -20°C for up to 1 year from the date of receipt, and avoid repeat freeze-thaw cycles.

TARGET INFORMATION

Gene ID	2191
Gene Symbol	FAP
Uniprot ID	SEPR_HUMAN
Immunogen	Synthesized peptide derived from human FAP-1 Polyclonal
Immunogen Region	
Specificity	FAP polyclonal antibody (Prolyl Endopeptidase Fap) binds to endogenous Prolyl Endopeptidase Fap.
Immunogen Sequence	



Western blot analysis of mouse-lung lysate, antibody was diluted at 1000. Secondary antibody was diluted at 1:20000