

Anti-KCNB1 antibody (STJ99614)

STJ99614

GENERAL INFORMATION

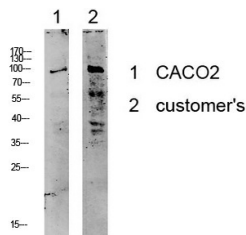
Product Type	Primary antibodies
Short Description	Rabbit polyclonal antibody anti-Potassium Voltage-Gated Channel Subfamily B Member 1 is suitable for use in Western Blot and ELISA research applications.
Applications	WB, ELISA
Host/Source	Rabbit
Reactivity	Human, Mouse, Rat

PRODUCT PROPERTIES

Clonality	Polyclonal
Clone ID	
Concentration	1 mg/mL
Conjugation	Unconjugated
Purification	The antibody was affinity-purified from rabbit anti-serum by affinity-chromatography.
Dilution Range	WB 1:500-2000 ELISA 1:10000-20000
Formulation	PBS, 50% Glycerol, 0.5% BSA and 0.02% Sodium Azide.
Isotype	IgG
Storage Instruction	Store at -20°C for up to 1 year from the date of receipt, and avoid repeat freeze-thaw cycles.

TARGET INFORMATION

Gene ID	3745
Gene Symbol	KCNB1
Uniprot ID	KCNB1_HUMAN
Immunogen	Synthesized peptide derived from human Kv2.1/KCNB1 Polyclonal
Immunogen Region	
Specificity	KCNB1 polyclonal antibody (Potassium Voltage-Gated Channel Subfamily B Member 1) binds to endogenous Potassium Voltage-Gated Channel Subfamily B Member 1.
Immunogen Sequence	



Western blot analysis of various lysate, antibody was diluted at 1000. Secondary antibody was diluted at 1:20000