

Anti-SMAD3 antibody (STJ99613)

STJ99613

GENERAL INFORMATION

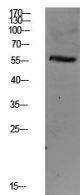
Product Type	Primary antibodies
Short Description	Rabbit polyclonal antibody anti-Mothers Against Decapentaplegic Homolog 3 is suitable for use in Western Blot and ELISA research applications.
Applications	WB, ELISA
Host/Source	Rabbit
Reactivity	Human, Mouse, Rat

PRODUCT PROPERTIES

Clonality	Polyclonal
Clone ID	
Concentration	1 mg/mL
Conjugation	Unconjugated
Purification	The antibody was affinity-purified from rabbit anti-serum by affinity-chromatography.
Dilution Range	WB 1:500-2000 ELISA 1:10000-20000
Formulation	PBS, 50% Glycerol, 0.5% BSA and 0.02% Sodium Azide.
Isotype	IgG
Storage Instruction	Store at -20°C for up to 1 year from the date of receipt, and avoid repeat freeze-thaw cycles.

TARGET INFORMATION

Gene ID	4088
Gene Symbol	SMAD3
Uniprot ID	SMAD3_HUMAN
Immunogen	Synthesized peptide derived from human Smad3
Immunogen Region	
Specificity	SMAD3 polyclonal antibody (Mothers Against Decapentaplegic Homolog 3) binds to endogenous Mothers Against Decapentaplegic Homolog 3.
Immunogen Sequence	



Western blot analysis of CACO2 lysate, antibody was diluted at 1000. Secondary antibody was diluted at 1:20000

This product is suitable for in-vitro studies under the RESEARCH USE ONLY [RUO] licence. This product must not be used as for diagnostic or other medical purposes.
St John's Laboratory Ltd, Knowledge Dock Business Centre, University Way, London, E16 2RD | Tel: 0208 223 3081