

Anti-Phospho-RIPK2-Ser176 antibody (STJ99600)

STJ99600

GENERAL INFORMATION

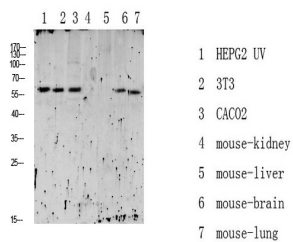
Product Type	Primary antibodies
Short Description	Rabbit polyclonal antibody anti-Phospho-Receptor-Interacting Serine/Threonine-Protein Kinase 2-Ser176 is suitable for use in Western Blot and ELISA research applications.
Applications	WB, ELISA
Host/Source	Rabbit
Reactivity	Human, Mouse, Rat

PRODUCT PROPERTIES

Clonality	Polyclonal
Clone ID	
Concentration	1 mg/mL
Conjugation	Unconjugated
Purification	The antibody was affinity-purified from rabbit anti-serum by affinity-chromatography.
Dilution	WB 1:500-2000
Range	ELISA 1:10000-20000
Formulation	PBS, 50% Glycerol, 0.5% BSA and 0.02% Sodium Azide.
Isotype	IgG
Storage	Store at -20°C for up to 1 year from the date of receipt, and avoid repeat freeze-thaw cycles.
Instruction	

TARGET INFORMATION

Gene ID	8767
Gene Symbol	RIPK2
Uniprot ID	RIPK2_HUMAN
Immunogen	Synthesized phospho derived from human RIPK2 (Phospho-Ser176)
Immunogen Region	
Specificity	Phospho-RIPK2-Ser176 polyclonal antibody (Receptor-Interacting Serine/Threonine-Protein Kinase 2) binds to endogenous Receptor-Interacting Serine/Threonine-Protein Kinase 2 only when phosphorylated at Ser176.
Immunogen Sequence	



Western blot analysis of various lysate, antibody was diluted at 1000. Secondary antibody was diluted at 1:20000