

Anti-Phospho-LATS1-Thr1079/1041 antibody (STJ99599)

STJ99599

GENERAL INFORMATION

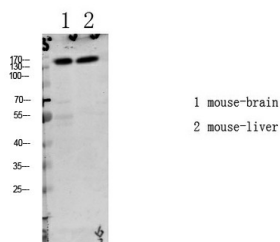
| | |
|--------------------------|---|
| Product Type | Primary antibodies |
| Short Description | Rabbit polyclonal antibody anti-Phospho-Serine/Threonine-Protein Kinase Lats1-Thr1079/1041 is suitable for use in Western Blot and ELISA research applications. |
| Applications | WB, ELISA |
| Host/Source | Rabbit |
| Reactivity | Human, Mouse, Rat |

PRODUCT PROPERTIES

| | |
|----------------------|--|
| Clonality | Polyclonal |
| Clone ID | |
| Concentration | 1 mg/mL |
| Conjugation | Unconjugated |
| Purification | The antibody was affinity-purified from rabbit anti-serum by affinity-chromatography. |
| Dilution | WB 1:500-2000 |
| Range | ELISA 1:10000-20000 |
| Formulation | PBS, 50% Glycerol, 0.5% BSA and 0.02% Sodium Azide. |
| Isotype | IgG |
| Storage | Store at -20°C for up to 1 year from the date of receipt, and avoid repeat freeze-thaw cycles. |
| Instruction | |

TARGET INFORMATION

| | |
|---------------------------|--|
| Gene ID | 9113 |
| Gene Symbol | LATS1 |
| Uniprot ID | LATS1_HUMAN |
| Immunogen | Synthesized phospho derived from human LATS1/2 (Phospho-Thr1079/1041) |
| Immunogen Region | |
| Specificity | Phospho-LATS1-Thr1079/1041 polyclonal antibody (Serine/Threonine-Protein Kinase Lats1) binds to endogenous Serine/Threonine-Protein Kinase Lats1 only when phosphorylated at Thr1079/1041. |
| Immunogen Sequence | |



Western blot analysis of various lysate, antibody was diluted at 1000. Secondary antibody was diluted at 1:20000