

## Anti-C1RL antibody (371-420) (STJ99346)

STJ99346

### GENERAL INFORMATION

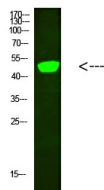
<b>Product Type</b>	Primary antibodies
<b>Short Description</b>	Rabbit polyclonal antibody anti-Complement C1r Subcomponent-Like Protein (371-420) is suitable for use in Western Blot and ELISA research applications.
<b>Applications</b>	WB, ELISA
<b>Host/Source</b>	Rabbit
<b>Reactivity</b>	Human, Rat, Mouse

### PRODUCT PROPERTIES

<b>Clonality</b>	Polyclonal
<b>Clone ID</b>	
<b>Concentration</b>	1 mg/mL
<b>Conjugation</b>	Unconjugated
<b>Purification</b>	The antibody was affinity-purified from rabbit anti-serum by affinity-chromatography.
<b>Dilution Range</b>	WB 1:500-2000 ELISA 1:10000-20000
<b>Formulation</b>	PBS, 50% Glycerol, 0.5% BSA and 0.02% Sodium Azide.
<b>Isotype</b>	IgG
<b>Storage</b>	Store at -20°C for up to 1 year from the date of receipt, and avoid repeat freeze-thaw cycles.
<b>Instruction</b>	

### TARGET INFORMATION

<b>Gene ID</b>	51279
<b>Gene Symbol</b>	C1RL
<b>Uniprot ID</b>	C1RL_HUMAN
<b>Immunogen</b>	Synthesized peptide derived from human C1RL. at amino acid range: 371-420
<b>Immunogen Region</b>	371-420
<b>Specificity</b>	C1RL polyclonal antibody (Complement C1r Subcomponent-Like Protein) binds to endogenous Complement C1r Subcomponent-Like Protein at the amino acid region 371-420.
<b>Immunogen Sequence</b>	



Western blot analysis of HeLa cells using primary antibody diluted at 1:500 (4°C overnight). Secondary antibody: Goat Anti-rabbit IgG IRDye 800 (diluted at 1:5000, 25°C, 1 hour)