

Anti-C8A antibody (201-250) (STJ99337)

STJ99337

GENERAL INFORMATION

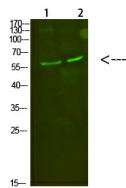
Product Type	Primary antibodies
Short Description	Rabbit polyclonal antibody anti-Complement Component C8 Alpha Chain (201-250) is suitable for use in Western Blot and ELISA research applications.
Applications	WB, ELISA
Host/Source	Rabbit
Reactivity	Human, Rat, Mouse

PRODUCT PROPERTIES

Clonality	Polyclonal
Clone ID	
Concentration	1 mg/mL
Conjugation	Unconjugated
Purification	The antibody was affinity-purified from rabbit anti-serum by affinity-chromatography.
Dilution Range	WB 1:500-2000 ELISA 1:10000-20000
Formulation	PBS, 50% Glycerol, 0.5% BSA and 0.02% Sodium Azide.
Isotype	IgG
Storage Instruction	Store at -20°C for up to 1 year from the date of receipt, and avoid repeat freeze-thaw cycles.

TARGET INFORMATION

Gene ID	731
Gene Symbol	C8A
Uniprot ID	CO8A_HUMAN
Immunogen	Synthesized peptide derived from human C8 Alpha. at amino acid range: 201-250
Immunogen Region	201-250
Specificity	C8A polyclonal antibody (Complement Component C8 Alpha Chain) binds to endogenous Complement Component C8 Alpha Chain at the amino acid region 201-250.
Immunogen Sequence	



Western blot analysis of 1, mouse-kidney 2, mouse-heart cells using primary antibody diluted at 1:500 (4°C overnight). Secondary antibody: Goat Anti-rabbit IgG IRDye 800 (diluted at 1:5000, 25°C, 1 hour)

This product is suitable for in-vitro studies under the RESEARCH USE ONLY [RUO] licence. This product must not be used as for diagnostic or other medical purposes.
St John's Laboratory Ltd, Knowledge Dock Business Centre, University Way, London, E16 2RD | Tel: 0208 223 3081