

Anti-GCK/GLK antibody (221-270) (STJ99334)

STJ99334

GENERAL INFORMATION

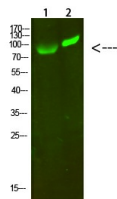
Product Type	Primary antibodies
Short Description	Rabbit polyclonal antibody anti-Mitogen-activated protein kinase kinase kinase 2 and Mitogen-activated protein kinase kinase kinase 3 (221-270) is suitable for use in Western Blot and ELISA research applications.
Applications	WB, ELISA
Host/Source	Rabbit
Reactivity	Human, Rat

PRODUCT PROPERTIES

Clonality	Polyclonal
Clone ID	
Concentration	1 mg/mL
Conjugation	Unconjugated
Purification	The antibody was affinity-purified from rabbit anti-serum by affinity-chromatography.
Dilution	WB 1:500-2000
Range	ELISA 1:10000-20000
Formulation	PBS, 50% Glycerol, 0.5% BSA and 0.02% Sodium Azide.
Isotype	IgG
Storage	Store at -20°C for up to 1 year from the date of receipt, and avoid repeat freeze-thaw cycles.
Instruction	

TARGET INFORMATION

Gene ID	5871 8491
Gene Symbol	MAP4K2 MAP4K3
Uniprot ID	M4K2_HUMAN M4K3_HUMAN
Immunogen	Synthesized peptide derived from human GCK/GLK. at amino acid range: 221-270
Immunogen Region	221-270
Specificity	GCK/GLK polyclonal antibody (Mitogen-activated protein kinase kinase kinase 2 and Mitogen-activated protein kinase kinase 3) binds to endogenous Mitogen-activated protein kinase kinase kinase 2 and Mitogen-activated protei
Immunogen Sequence	



Western blot analysis of 1, 293T 2, hela cells using primary antibody diluted at 1:1000 (4°C overnight). Secondary antibody: Goat Anti-rabbit IgG IRDye 800 (diluted at 1:5000, 25°C, 1 hour)

This product is suitable for in-vitro studies under the RESEARCH USE ONLY [RUO] licence. This product must not be used as for diagnostic or other medical purposes.
St John's Laboratory Ltd, Knowledge Dock Business Centre, University Way, London, E16 2RD | Tel: 0208 223 3081