

Anti-GCM2 antibody (21-70) (STJ99332)

STJ99332

GENERAL INFORMATION

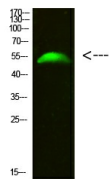
Product Type	Primary antibodies
Short Description	Rabbit polyclonal antibody anti-Chorion-Specific Transcription Factor Gcmb (21-70) is suitable for use in Western Blot and ELISA research applications.
Applications	WB, ELISA
Host/Source	Rabbit
Reactivity	Human, Mouse, Rat

PRODUCT PROPERTIES

Clonality	Polyclonal
Clone ID	
Concentration	1 mg/mL
Conjugation	Unconjugated
Purification	The antibody was affinity-purified from rabbit anti-serum by affinity-chromatography.
Dilution Range	WB 1:500-2000 ELISA 1:10000-20000
Formulation	PBS, 50% Glycerol, 0.5% BSA and 0.02% Sodium Azide.
Isotype	IgG
Storage Instruction	Store at -20°C for up to 1 year from the date of receipt, and avoid repeat freeze-thaw cycles.

TARGET INFORMATION

Gene ID	9247
Gene Symbol	GCM2
Uniprot ID	GCM2_HUMAN
Immunogen	Synthesized peptide derived from human GCM2. at amino acid range: 21-70
Immunogen Region	21-70
Specificity	GCM2 polyclonal antibody (Chorion-Specific Transcription Factor Gcmb) binds to endogenous Chorion-Specific Transcription Factor Gcmb at the amino acid region 21-70.
Immunogen Sequence	



Western blot analysis of 293T cells using primary antibody diluted at 1:500 (4°C overnight). Secondary antibody: Goat Anti-rabbit IgG IRDye 800 (diluted at 1:5000, 25°C, 1 hour)