

Anti-TPM1 antibody (101-150) (STJ99331)

STJ99331

GENERAL INFORMATION

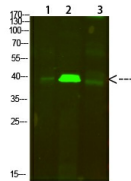
Product Type	Primary antibodies
Short Description	Rabbit polyclonal antibody anti-Tropomyosin Alpha-1 Chain (101-150) is suitable for use in Western Blot and ELISA research applications.
Applications	WB, ELISA
Host/Source	Rabbit
Reactivity	Human, Mouse, Rat

PRODUCT PROPERTIES

Clonality	Polyclonal
Clone ID	
Concentration	1 mg/mL
Conjugation	Unconjugated
Purification	The antibody was affinity-purified from rabbit anti-serum by affinity-chromatography.
Dilution Range	WB 1:500-2000 ELISA 1:10000-20000
Formulation	PBS, 50% Glycerol, 0.5% BSA and 0.02% Sodium Azide.
Isotype	IgG
Storage Instruction	Store at -20°C for up to 1 year from the date of receipt, and avoid repeat freeze-thaw cycles.

TARGET INFORMATION

Gene ID	7168
Gene Symbol	TPM1
Uniprot ID	TPM1_HUMAN
Immunogen	Synthesized peptide derived from human Tropomyosin Alpha. at amino acid range: 101-150
Immunogen Region	101-150
Specificity	TPM1 polyclonal antibody (Tropomyosin Alpha-1 Chain) binds to endogenous Tropomyosin Alpha-1 Chain at the amino acid region 101-150.
Immunogen Sequence	



Western blot analysis of 1, mouse-lung 2, mouse-brain 3, mouse-spleen cells using primary antibody diluted at 1:500 (4°C overnight). Secondary antibody: Goat Anti-rabbit IgG IRDye 800 (diluted at 1:5000, 25°C, 1 hour)

This product is suitable for in-vitro studies under the RESEARCH USE ONLY [RUO] licence. This product must not be used as for diagnostic or other medical purposes.
St John's Laboratory Ltd, Knowledge Dock Business Centre, University Way, London, E16 2RD | Tel: 0208 223 3081