

Anti-Smad1/5/9 antibody (291-340) (STJ99327)

STJ99327

GENERAL INFORMATION

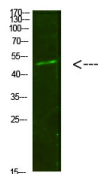
Product Type	Primary antibodies
Short Description	Rabbit polyclonal antibody anti-Mothers against decapentaplegic homolog 1 and Mothers against decapentaplegic homolog 5 and Mothers against decapentaplegic homolog 9 (291-340) is suitable for use in Western Blot and ELISA research applications.
Applications	WB, ELISA
Host/Source	Rabbit
Reactivity	Human, Mouse, Rat

PRODUCT PROPERTIES

Clonality	Polyclonal
Clone ID	
Concentration	1 mg/mL
Conjugation	Unconjugated
Purification	The antibody was affinity-purified from rabbit anti-serum by affinity-chromatography.
Dilution	WB 1:500-2000
Range	ELISA 1:10000-20000
Formulation	PBS, 50% Glycerol, 0.5% BSA and 0.02% Sodium Azide.
Isotype	IgG
Storage Instruction	Store at -20°C for up to 1 year from the date of receipt, and avoid repeat freeze-thaw cycles.

TARGET INFORMATION

Gene ID	4086 4090 4093 SMAD1 SMAD5 SMAD1_HUMAN SMAD5_HUMAN SMAD9_HUMAN
Immunogen	Synthesized peptide derived from human Smad1/5/9. at amino acid range: 291-340
Immunogen Region	291-340
Specificity	Smad1/5/9 polyclonal antibody (Mothers against decapentaplegic homolog 1 and Mothers against decapentaplegic homolog 5 and Mothers against decapentaplegic homolog 9) binds to endogenous Mothers against decapentaplegic homolog 1 and Mothers against de
Immunogen Sequence	



Western blot analysis of 293T cells using primary antibody diluted at 1:500 (4°C overnight). Secondary antibody: Goat Anti-rabbit IgG IRDye 800 (diluted at 1:5000, 25°C, 1 hour)

This product is suitable for in-vitro studies under the RESEARCH USE ONLY [RUO] licence. This product must not be used as for diagnostic or other medical purposes.
 St John's Laboratory Ltd, Knowledge Dock Business Centre, University Way, London, E16 2RD | Tel: 0208 223 3081