

Anti-Keratin8/18 antibody (STJ99290)

STJ99290

GENERAL INFORMATION

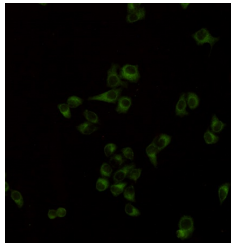
Product Type	Primary antibodies
Short Description	Mouse monoclonal antibody anti-Keratin, type II cytoskeletal 8 and Keratin, type I cytoskeletal 18 is suitable for use in Western Blot and Immunocytochemistry research applications.
Applications	WB, ICC
Host/Source	Mouse
Reactivity	Human

PRODUCT PROPERTIES

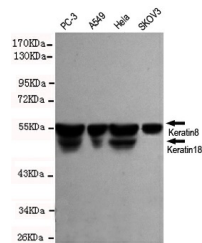
Clonality	Monoclonal
Clone ID	
Concentration	1 mg/mL
Conjugation	Unconjugated
Purification	The antibody was isolated from ascitic fluid by immunoaffinity chromatography using antigens coupled to agarose beads.
Dilution Range	WB 1:500-2000 ICC 1:50-200
Formulation	PBS, 50% Glycerol, 0.5% BSA and 0.02% Sodium Azide.
Isotype	IgG2a
Storage	Store at -20°C for up to 1 year from the date of receipt, and avoid repeat freeze-thaw cycles.
Instruction	

TARGET INFORMATION

Gene ID	3856 3875
Gene Symbol	KRT8 KRT18
Uniprot ID	K2C8_HUMAN K1C18_HUMAN
Immunogen	Recombinant protein corresponding to full length Keratin8 of human.
Immunogen Region	
Specificity	Keratin8/18 monoclonal antibody (Keratin, type II cytoskeletal 8 and Keratin, type I cytoskeletal 18) binds to endogenous Keratin, type II cytoskeletal 8 and Keratin, type I cytoskeletal 18.
Immunogen Sequence	



Immunocytochemistry staining of HeLa cells using anti-keratin8/18 antibody (dilution 1:200).



Western blot detection of keratin8/18 in HeLa, A549, PC-3 and SKOV3 cell lysates using keratin8/18 antibody (1:1000 diluted). Predicted band size:55kDa.Observed band size:55kDa.

This product is suitable for in-vitro studies under the RESEARCH USE ONLY [RUO] licence. This product must not be used as for diagnostic or other medical purposes.
St John's Laboratory Ltd, Knowledge Dock Business Centre, University Way, London, E16 2RD | Tel: 0208 223 3081