

Anti-MAP2K6 antibody [8A11-G11-G11] (STJ99282)

STJ99282

GENERAL INFORMATION

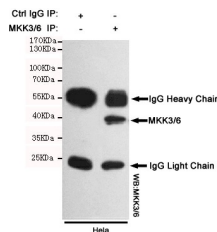
Product Type	Primary antibodies
Short Description	Mouse monoclonal antibody anti-Dual Specificity Mitogen-Activated Protein Kinase Kinase 6 is suitable for use in Western Blot and Immunoprecipitation research applications.
Applications	WB, IP
Host/Source	Mouse
Reactivity	Human, Rat

PRODUCT PROPERTIES

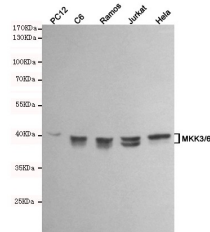
Clonality	Monoclonal
Clone ID	8A11-G11-G11
Concentration	1 mg/mL
Conjugation	Unconjugated
Purification	The antibody was isolated from ascitic fluid by immunoaffinity chromatography using antigens coupled to agarose beads.
Dilution Range	WB 1:1000
Formulation	PBS, 50% Glycerol, 0.5% BSA and 0.02% Sodium Azide.
Isotype	IgG1
Storage Instruction	Store at -20°C for up to 1 year from the date of receipt, and avoid repeat freeze-thaw cycles.

TARGET INFORMATION

Gene ID	5608
Gene Symbol	MAP2K6
Uniprot ID	MP2K6_HUMAN
Immunogen	Purified recombinant human MKK6 protein fragments expressed in E.coli.
Immunogen Region	
Specificity	MAP2K6 monoclonal antibody (Dual Specificity Mitogen-Activated Protein Kinase Kinase 6) binds to endogenous Dual Specificity Mitogen-Activated Protein Kinase Kinase 6.
Immunogen Sequence	



Immunoprecipitation analysis of HeLa cell lysates using MKK3/6 mouse mAb.



Western blot analysis of extracts from PC12, C6, Ramos, Jurkat and HeLa cell lysates using MKK3/6 mouse mAb (1:1000 diluted). Predicted band size: 40kDa. Observed band size: 40kDa.

This product is suitable for in-vitro studies under the RESEARCH USE ONLY [RUO] licence. This product must not be used as for diagnostic or other medical purposes.
 St John's Laboratory Ltd, Knowledge Dock Business Centre, University Way, London, E16 2RD | Tel: 0208 223 3081