

Anti-CKM antibody [6A12-C8] (STJ99279)

STJ99279

GENERAL INFORMATION

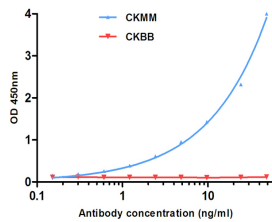
Product Type	Primary antibodies
Short Description	Mouse monoclonal antibody anti-Creatine Kinase M-Type is suitable for use in ELISA research applications.
Applications	ELISA
Host/Source	Mouse
Reactivity	Human

PRODUCT PROPERTIES

Clonality	Monoclonal
Clone ID	6A12-C8
Concentration	1 mg/mL
Conjugation	Unconjugated
Purification	The antibody was isolated from ascitic fluid by immunoaffinity chromatography using antigens coupled to agarose beads.
Dilution Range	ELISA 1:10000-20000
Formulation	PBS, 50% Glycerol, 0.5% BSA and 0.02% Sodium Azide.
Isotype	IgG2b
Storage Instruction	Store at -20°C for up to 1 year from the date of receipt, and avoid repeat freeze-thaw cycles.

TARGET INFORMATION

Gene ID	1158
Gene Symbol	CKM
Uniprot ID	KCRM_HUMAN
Immunogen	Purified recombinant human CK-MM protein expressed in E.coli.
Immunogen Region	
Specificity	
Immunogen Sequence	



Indirect ELISA assay for anti-CK-MM mouse mAb, CKBB as control antigen. Antigen coating concentration: 4ug/ml.

This product is suitable for in-vitro studies under the RESEARCH USE ONLY [RUO] licence. This product must not be used as for diagnostic or other medical purposes.
 St John's Laboratory Ltd, Knowledge Dock Business Centre, University Way, London, E16 2RD | Tel: 0208 223 3081