

Anti-GRAP2 antibody [5C7-F4-E7] (STJ99275)

STJ99275

GENERAL INFORMATION

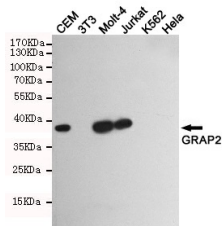
Product Type	Primary antibodies
Short Description	Mouse monoclonal antibody anti-Grb2-Related Adapter Protein 2 is suitable for use in Western Blot research applications.
Applications	WB
Host/Source	Mouse
Reactivity	Human

PRODUCT PROPERTIES

Clonality	Monoclonal
Clone ID	5C7-F4-E7
Concentration	1 mg/mL
Conjugation	Unconjugated
Purification	The antibody was isolated from ascitic fluid by immunoaffinity chromatography using antigens coupled to agarose beads.
Dilution Range	WB 1:1000
Formulation	PBS, 50% Glycerol, 0.5% BSA and 0.02% Sodium Azide.
Isotype	IgG2b
Storage Instruction	Store at -20°C for up to 1 year from the date of receipt, and avoid repeat freeze-thaw cycles.

TARGET INFORMATION

Gene ID	9402
Gene Symbol	GRAP2
Uniprot ID	GRAP2_HUMAN
Immunogen	Recombinant protein of human GRAP2.
Immunogen Region	
Specificity	GRAP2 monoclonal antibody (Grb2-Related Adapter Protein 2) binds to endogenous Grb2-Related Adapter Protein 2.
Immunogen Sequence	



Western blot detection of GRAP2 in GRAP2 positive cell (CEM, Molt-4, Jurkat) and negative cell (3T3, K562, HeLa) lysates using GRAP2 mouse mAb (1:1000 diluted). Predicted band size: 38KDa. Observed band size: 38KDa.

This product is suitable for in-vitro studies under the RESEARCH USE ONLY [RUO] licence. This product must not be used as for diagnostic or other medical purposes.
 St John's Laboratory Ltd, Knowledge Dock Business Centre, University Way, London, E16 2RD | Tel: 0208 223 3081