

## Anti-RPS6KA1 antibody [6B9-D6-F8] (STJ99265)

STJ99265

### GENERAL INFORMATION

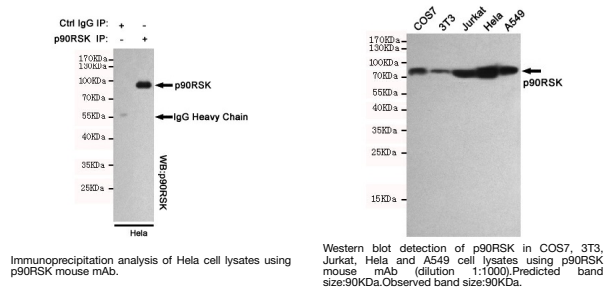
<b>Product Type</b>	Primary antibodies
<b>Short Description</b>	Mouse monoclonal antibody anti-Ribosomal Protein S6 Kinase Alpha-1 is suitable for use in Western Blot and Immunoprecipitation research applications.
<b>Applications</b>	WB, IP
<b>Host/Source</b>	Mouse
<b>Reactivity</b>	Human, Mouse, Monkey

### PRODUCT PROPERTIES

<b>Clonality</b>	Monoclonal
<b>Clone ID</b>	6B9-D6-F8
<b>Concentration</b>	1 mg/mL
<b>Conjugation</b>	Unconjugated
<b>Purification</b>	The antibody was isolated from ascitic fluid by immunoaffinity chromatography using antigens coupled to agarose beads.
<b>Dilution Range</b>	WB 1:1000
<b>Formulation</b>	PBS, 50% Glycerol, 0.5% BSA and 0.02% Sodium Azide.
<b>Isotype</b>	IgG1
<b>Storage Instruction</b>	Store at -20°C for up to 1 year from the date of receipt, and avoid repeat freeze-thaw cycles.

### TARGET INFORMATION

<b>Gene ID</b>	6195
<b>Gene Symbol</b>	RPS6KA1
<b>Uniprot ID</b>	KS6A1_HUMAN
<b>Immunogen</b>	Purified recombinant human p90RSK protein fragments expressed in E.coli.
<b>Immunogen Region</b>	
<b>Specificity</b>	RPS6KA1 monoclonal antibody (Ribosomal Protein S6 Kinase Alpha-1) binds to endogenous Ribosomal Protein S6 Kinase Alpha-1.
<b>Immunogen Sequence</b>	



This product is suitable for in-vitro studies under the RESEARCH USE ONLY [RUO] licence. This product must not be used as for diagnostic or other medical purposes.  
 St John's Laboratory Ltd, Knowledge Dock Business Centre, University Way, London, E16 2RD | Tel: 0208 223 3081