

Anti-IGHM antibody [3E12-H4-G4] (STJ99249)

STJ99249

GENERAL INFORMATION

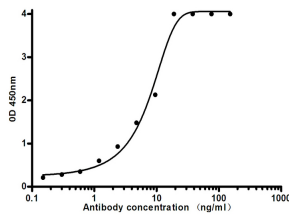
Product Type	Primary antibodies
Short Description	Mouse monoclonal antibody anti-Immunoglobulin Heavy Constant Mu is suitable for use in ELISA research applications.
Applications	ELISA
Host/Source	Mouse
Reactivity	Human

PRODUCT PROPERTIES

Clonality	Monoclonal
Clone ID	3E12-H4-G4
Concentration	1 mg/mL
Conjugation	Unconjugated
Purification	The antibody was isolated from ascitic fluid by immunoaffinity chromatography using antigens coupled to agarose beads.
Dilution Range	ELISA 1:10000-20000
Formulation	PBS, 50% Glycerol, 0.5% BSA and 0.02% Sodium Azide.
Isotype	IgG2a
Storage Instruction	Store at -20°C for up to 1 year from the date of receipt, and avoid repeat freeze-thaw cycles.

TARGET INFORMATION

Gene ID	NA
Gene Symbol	IGHM
Uniprot ID	IGHM_HUMAN
Immunogen	Purified recombinant full length of human IgM heavy chain protein expressed in E.coli.
Immunogen Region	
Specificity	
Immunogen Sequence	



Indirect ELISA assay for Mouse Anti-human IgM mouse mAb. Antigen coating concentration: 2µg/ml.

This product is suitable for in-vitro studies under the RESEARCH USE ONLY [RUO] licence. This product must not be used as for diagnostic or other medical purposes.
St John's Laboratory Ltd, Knowledge Dock Business Centre, University Way, London, E16 2RD | Tel: 0208 223 3081