

Anti-LMNA antibody [3D6-F4-B7] (STJ99232)

STJ99232

GENERAL INFORMATION

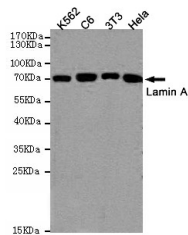
Product Type	Primary antibodies
Short Description	Mouse monoclonal antibody anti-Prelamin-A/C Cleaved Into-Lamin-A/C is suitable for use in Western Blot research applications.
Applications	WB
Host/Source	Mouse
Reactivity	Human, Mouse, Rat

PRODUCT PROPERTIES

Clonality	Monoclonal
Clone ID	3D6-F4-B7
Concentration	1 mg/mL
Conjugation	Unconjugated
Purification	The antibody was isolated from ascitic fluid by immunoaffinity chromatography using antigens coupled to agarose beads.
Dilution Range	WB 1:1000
Formulation	PBS, 50% Glycerol, 0.5% BSA and 0.02% Sodium Azide.
Isotype	IgG2a
Storage Instruction	Store at -20°C for up to 1 year from the date of receipt, and avoid repeat freeze-thaw cycles.

TARGET INFORMATION

Gene ID	4000
Gene Symbol	LMNA
Uniprot ID	LMNA_HUMAN
Immunogen	Purified recombinant human LMNA protein fragments expressed in E.coli.
Immunogen Region	
Specificity	LMNA monoclonal antibody (Prelamin-A/C Cleaved Into-Lamin-A/C) binds to endogenous Prelamin-A/C Cleaved Into-Lamin-A/C.
Immunogen Sequence	



Western blot detection of Lamin A in K562, C6, 3T3 and HeLa cell lysates using Lamin A mouse mAb (1:1000 diluted). Predicted band size: 74 kDa. Observed band size: 74 kDa.

This product is suitable for in-vitro studies under the RESEARCH USE ONLY [RUO] licence. This product must not be used as for diagnostic or other medical purposes.
St John's Laboratory Ltd, Knowledge Dock Business Centre, University Way, London, E16 2RD | Tel: 0208 223 3081