

Anti-EGFR antibody [3F12-1H7-A10] (STJ99228)

STJ99228

GENERAL INFORMATION

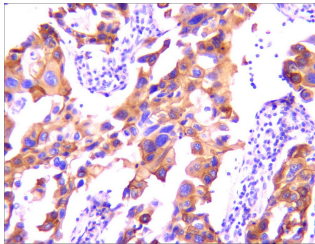
Product Type	Primary antibodies
Short Description	Mouse monoclonal antibody anti-Epidermal Growth Factor Receptor is suitable for use in Western Blot, Immunocytochemistry, Immunohistochemistry and Immunoprecipitation research applications.
Applications	WB, ICC, IHC, IP
Host/Source	Mouse
Reactivity	Human

PRODUCT PROPERTIES

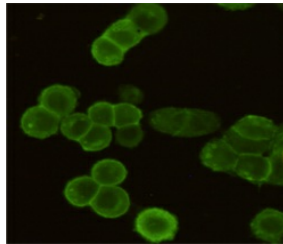
Clonality	Monoclonal
Clone ID	3F12-1H7-A10
Concentration	1 mg/mL
Conjugation	Unconjugated
Purification	The antibody was isolated from ascitic fluid by immunoaffinity chromatography using antigens coupled to agarose beads.
Dilution	WB 1:1000
Range	ICC 1:200 ihc 1:800
Formulation	PBS, 50% Glycerol, 0.5% BSA and 0.02% Sodium Azide.
Isotype	IgG1
Storage Instruction	Store at -20°C for up to 1 year from the date of receipt, and avoid repeat freeze-thaw cycles.

TARGET INFORMATION

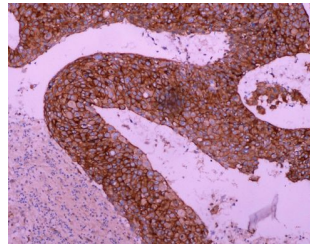
Gene ID	1956
Gene Symbol	EGFR
Uniprot ID	EGFR_HUMAN
Immunogen	Purified recombinant human EGFR protein fragments expressed in E.coli.
Immunogen Region	
Specificity	EGFR monoclonal antibody (Epidermal Growth Factor Receptor) binds to endogenous Epidermal Growth Factor Receptor.
Immunogen Sequence	



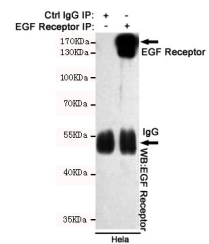
Immunohistochemical analysis of paraffin-embedded Colorectal cancer using EGF Receptor (3F12) mouse mAb (1/800 dilution). Antigen retrieval was performed by pressure cooking in citrate buffer (pH 6.0).



Immunocytochemistry staining of MDA-MB-468 cells fixed with 4% Paraformaldehyde and using EGFR mouse mAb (dilution 1:200).



Immunohistochemical analysis of paraffin-embedded Lung carcinoma using EGF Receptor (3F12) mouse mAb (1/800 dilution) at the Roche Benchmark XT system.



Immunoprecipitation analysis of HeLa cell lysates using EGFR mouse mAb.

This product is suitable for in-vitro studies under the RESEARCH USE ONLY [RUO] licence. This product must not be used as for diagnostic or other medical purposes.
St John's Laboratory Ltd, Knowledge Dock Business Centre, University Way, London, E16 2RD | Tel: 0208 223 3081