

Anti-HTRA2 antibody [8G11-4B8-4F10-G5] (STJ99217)

STJ99217

GENERAL INFORMATION

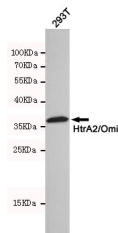
Product Type	Primary antibodies
Short Description	Mouse monoclonal antibody anti-Serine Protease Htra2-Mitochondrial is suitable for use in Western Blot research applications.
Applications	WB
Host/Source	Mouse
Reactivity	Human

PRODUCT PROPERTIES

Clonality	Monoclonal
Clone ID	8G11-4B8-4F10-G5
Concentration	1 mg/mL
Conjugation	Unconjugated
Purification	The antibody was isolated from ascitic fluid by immunoaffinity chromatography using antigens coupled to agarose beads.
Dilution Range	WB 1:500
Formulation	PBS, 50% Glycerol, 0.5% BSA and 0.02% Sodium Azide.
Isotype	IgG1
Storage Instruction	Store at -20°C for up to 1 year from the date of receipt, and avoid repeat freeze-thaw cycles.

TARGET INFORMATION

Gene ID	27429
Gene Symbol	HTRA2
Uniprot ID	HTRA2_HUMAN
Immunogen	Recombinant human HtrA2/Omi protein.
Immunogen Region	
Specificity	HTRA2 monoclonal antibody (Serine Protease Htra2-Mitochondrial) binds to endogenous Serine Protease Htra2-Mitochondrial.
Immunogen Sequence	



Western blot detection of HtrA2/Omi in 293T cell lysates using HtrA2/Omi mouse mAb (dilution 1:500). Predicted band size: 49kDa. Observed band size: 36kDa.

This product is suitable for in-vitro studies under the RESEARCH USE ONLY [RUO] licence. This product must not be used as for diagnostic or other medical purposes.
 St John's Laboratory Ltd, Knowledge Dock Business Centre, University Way, London, E16 2RD | Tel: 0208 223 3081