

Anti-MLH1 antibody [2B3-H6-C11] (STJ99207)

STJ99207

GENERAL INFORMATION

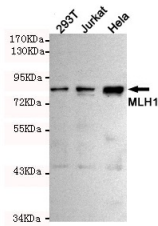
Product Type	Primary antibodies
Short Description	Mouse monoclonal antibody anti-Dna Mismatch Repair Protein Mlh1 is suitable for use in Western Blot research applications.
Applications	WB
Host/Source	Mouse
Reactivity	Human

PRODUCT PROPERTIES

Clonality	Monoclonal
Clone ID	2B3-H6-C11
Concentration	1 mg/mL
Conjugation	Unconjugated
Purification	The antibody was isolated from ascitic fluid by immunoaffinity chromatography using antigens coupled to agarose beads.
Dilution Range	WB 1:500
Formulation	PBS, 50% Glycerol, 0.5% BSA and 0.02% Sodium Azide.
Isotype	IgG2b
Storage Instruction	Store at -20°C for up to 1 year from the date of receipt, and avoid repeat freeze-thaw cycles.

TARGET INFORMATION

Gene ID	4292
Gene Symbol	MLH1
Uniprot ID	MLH1_HUMAN
Immunogen	Purified recombinant human MLH1 protein fragments expressed in E.coli.
Immunogen Region	
Specificity	MLH1 monoclonal antibody (Dna Mismatch Repair Protein Mlh1) binds to endogenous Dna Mismatch Repair Protein Mlh1.
Immunogen Sequence	



Western blot detection of MLH1 in HeLa, 293T and Jurkat cell lysates using MLH1 mouse mAb (1:500 diluted). Predicted band size: 85kDa. Observed band size: 85kDa.

This product is suitable for in-vitro studies under the RESEARCH USE ONLY [RUO] licence. This product must not be used as for diagnostic or other medical purposes.
 St John's Laboratory Ltd, Knowledge Dock Business Centre, University Way, London, E16 2RD | Tel: 0208 223 3081