

Anti-LIN28A antibody [2C1-F9-A2] (STJ99177)

STJ99177

GENERAL INFORMATION

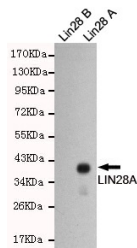
Product Type	Primary antibodies
Short Description	Mouse monoclonal antibody anti-Protein Lin-28 Homolog A is suitable for use in Western Blot research applications.
Applications	WB
Host/Source	Mouse
Reactivity	Human, Mouse

PRODUCT PROPERTIES

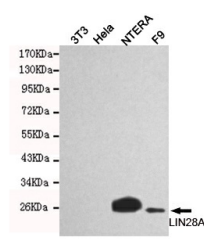
Clonality	Monoclonal
Clone ID	2C1-F9-A2
Concentration	1 mg/mL
Conjugation	Unconjugated
Purification	The antibody was isolated from ascitic fluid by immunoaffinity chromatography using antigens coupled to agarose beads.
Dilution Range	WB 1:1000
Formulation	PBS, 50% Glycerol, 0.5% BSA and 0.02% Sodium Azide.
Isotype	IgG2a
Storage Instruction	Store at -20°C for up to 1 year from the date of receipt, and avoid repeat freeze-thaw cycles.

TARGET INFORMATION

Gene ID	79727
Gene Symbol	LIN28A
Uniprot ID	LN28A_HUMAN
Immunogen	Purified recombinant human LIN28A protein fragments expressed in E.coli
Immunogen Region	
Specificity	LIN28A monoclonal antibody (Protein Lin-28 Homolog A) binds to endogenous Protein Lin-28 Homolog A.
Immunogen Sequence	



Western blot detection of LIN28A in LIN28B and LIN28A recombinant antigen fragments and using LIN28A mouse mAb (1:1000 diluted).



Western blot detection of LIN28 in NTERA and F9 cell lysates using LIN28A mouse mAb (1:1000 diluted). Predicted band size:26kDa.Observed band size:26kDa.

This product is suitable for in-vitro studies under the RESEARCH USE ONLY [RUO] licence. This product must not be used as for diagnostic or other medical purposes.
 St John's Laboratory Ltd, Knowledge Dock Business Centre, University Way, London, E16 2RD | Tel: 0208 223 3081