

Anti-MSI1 antibody [3F8-E6-B9] (STJ99158)

STJ99158

GENERAL INFORMATION

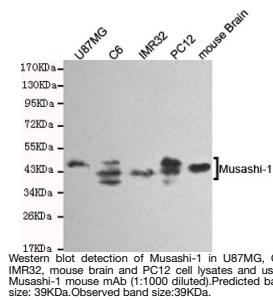
Product Type	Primary antibodies
Short Description	Mouse monoclonal antibody anti-Rna-Binding Protein Musashi Homolog 1 is suitable for use in Western Blot research applications.
Applications	WB
Host/Source	Mouse
Reactivity	Human, Mouse, Rat

PRODUCT PROPERTIES

Clonality	Monoclonal
Clone ID	3F8-E6-B9
Concentration	1 mg/mL
Conjugation	Unconjugated
Purification	The antibody was isolated from ascitic fluid by immunoaffinity chromatography using antigens coupled to agarose beads.
Dilution Range	WB 1:1000
Formulation	PBS, 50% Glycerol, 0.5% BSA and 0.02% Sodium Azide.
Isotype	IgG2b
Storage Instruction	Store at -20°C for up to 1 year from the date of receipt, and avoid repeat freeze-thaw cycles.

TARGET INFORMATION

Gene ID	4440
Gene Symbol	MSI1
Uniprot ID	MSI1H_HUMAN
Immunogen	Purified recombinant human Musashi-1 protein fragments expressed in E.coli.
Immunogen Region	
Specificity	MSI1 monoclonal antibody (Rna-Binding Protein Musashi Homolog 1) binds to endogenous Rna-Binding Protein Musashi Homolog 1.
Immunogen Sequence	



This product is suitable for in-vitro studies under the RESEARCH USE ONLY [RUO] licence. This product must not be used as for diagnostic or other medical purposes.
 St John's Laboratory Ltd, Knowledge Dock Business Centre, University Way, London, E16 2RD | Tel: 0208 223 3081