

Anti-CKMT2 antibody [3F4-G5-H5] (STJ99155)

STJ99155

GENERAL INFORMATION

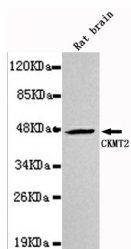
Product Type	Primary antibodies
Short Description	Mouse monoclonal antibody anti-Creatine Kinase S-Type-Mitochondrial is suitable for use in Western Blot research applications.
Applications	WB
Host/Source	Mouse
Reactivity	Rat

PRODUCT PROPERTIES

Clonality	Monoclonal
Clone ID	3F4-G5-H5
Concentration	1 mg/mL
Conjugation	Unconjugated
Purification	The antibody was isolated from ascitic fluid by immunoaffinity chromatography using antigens coupled to agarose beads.
Dilution Range	WB 1:1000
Formulation	PBS, 50% Glycerol, 0.5% BSA and 0.02% Sodium Azide.
Isotype	IgG2b
Storage Instruction	Store at -20°C for up to 1 year from the date of receipt, and avoid repeat freeze-thaw cycles.

TARGET INFORMATION

Gene ID	1160
Gene Symbol	CKMT2
Uniprot ID	KCRS_HUMAN
Immunogen	Purified recombinant human CKMT2 protein fragments expressed in E.coli.
Immunogen Region	
Specificity	CKMT2 monoclonal antibody (Creatine Kinase S-Type-Mitochondrial) binds to endogenous Creatine Kinase S-Type-Mitochondrial.
Immunogen Sequence	



Western blot detection of CKMT2 in Rat Brain lysates using CKMT2 mouse mAb (1:1000 diluted). Predicted band size: 47kDa. Observed band size: 47kDa.

This product is suitable for in-vitro studies under the RESEARCH USE ONLY [RUO] licence. This product must not be used as for diagnostic or other medical purposes.
 St John's Laboratory Ltd, Knowledge Dock Business Centre, University Way, London, E16 2RD | Tel: 0208 223 3081