

Anti-DLAT antibody [4A4-B6-C10] (STJ99150)

STJ99150

GENERAL INFORMATION

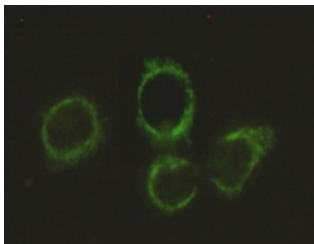
Product Type	Primary antibodies
Short Description	Mouse monoclonal antibody anti-Dihydropolyllysine-Residue Acetyltransferase Component Of Pyruvate Dehydrogenase Complex-Mitochondrial is suitable for use in Western Blot, Immunocytochemistry and Immunoprecipitation research applications.
Applications	WB, ICC, IP
Host/Source	Mouse
Reactivity	Human, Mouse

PRODUCT PROPERTIES

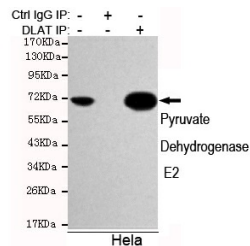
Clonality	Monoclonal
Clone ID	4A4-B6-C10
Concentration	1 mg/mL
Conjugation	Unconjugated
Purification	The antibody was isolated from ascitic fluid by immunoaffinity chromatography using antigens coupled to agarose beads.
Dilution	WB 1:1000
Range	ICC 1:300
Formulation	PBS, 50% Glycerol, 0.5% BSA and 0.02% Sodium Azide.
Isotype	IgG1
Storage	Store at -20°C for up to 1 year from the date of receipt, and avoid repeat freeze-thaw cycles.
Instruction	

TARGET INFORMATION

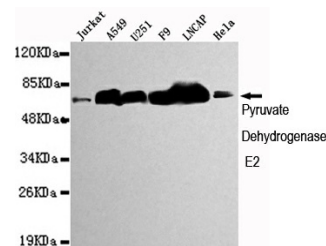
Gene ID	1737
Gene Symbol	DLAT
Uniprot ID	ODP2_HUMAN
Immunogen	Purified recombinant human Pyruvate Dehydrogenase E2 protein fragments expressed in E.coli.
Immunogen Region	
Specificity	DLAT monoclonal antibody (Dihydropolyllysine-Residue Acetyltransferase Component Of Pyruvate Dehydrogenase Complex-Mitochondrial) binds to endogenous Dihydropolyllysine-Residue Acetyltransferase Component Of Pyruvate Dehydrogenase Complex-Mitochondrion
Immunogen Sequence	



Immunocytochemistry stain of HeLa using Pyruvate Dehydrogenase E2 mouse mAb (1:300).



Immunoprecipitation analysis of HeLa cell lysates using Pyruvate Dehydrogenase E2 mouse mAb.



Western blot detection of Pyruvate Dehydrogenase E2 in Jurkat, A549, U251, F9, Lncap and HeLa cell lysates using Pyruvate Dehydrogenase E2 mouse mAb (1:1000 diluted). Predicted band size: 69kDa. Observed band size: 69kDa.

This product is suitable for in-vitro studies under the RESEARCH USE ONLY [RUO] licence. This product must not be used as for diagnostic or other medical purposes.
St John's Laboratory Ltd, Knowledge Dock Business Centre, University Way, London, E16 2RD | Tel: 0208 223 3081