

Anti-CALU antibody [4C6-G10-B12] (STJ99147)

STJ99147

GENERAL INFORMATION

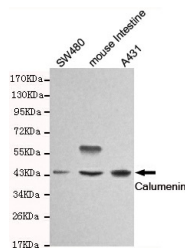
Product Type	Primary antibodies
Short Description	Mouse monoclonal antibody anti-Calumenin is suitable for use in Western Blot research applications.
Applications	WB
Host/Source	Mouse
Reactivity	Human, Mouse

PRODUCT PROPERTIES

Clonality	Monoclonal
Clone ID	4C6-G10-B12
Concentration	1 mg/mL
Conjugation	Unconjugated
Purification	The antibody was isolated from ascitic fluid by immunoaffinity chromatography using antigens coupled to agarose beads.
Dilution Range	WB 1:1000
Formulation	PBS, 50% Glycerol, 0.5% BSA and 0.02% Sodium Azide.
Isotype	IgG1
Storage Instruction	Store at -20°C for up to 1 year from the date of receipt, and avoid repeat freeze-thaw cycles.

TARGET INFORMATION

Gene ID	813
Gene Symbol	CALU
Uniprot ID	CALU_HUMAN
Immunogen	Purified recombinant human Calumenin protein fragments expressed in E.coli.
Immunogen Region	
Specificity	CALU monoclonal antibody (Calumenin) binds to endogenous Calumenin.
Immunogen Sequence	



Western blot detection of Calumenin in SW480, mouse intestine and A431 cell lysates and using Calumenin mouse mAb (1:1000 diluted). Predicted band size: 37kDa. Observed band size: 45kDa.

This product is suitable for in-vitro studies under the RESEARCH USE ONLY [RUO] licence. This product must not be used as for diagnostic or other medical purposes.
 St John's Laboratory Ltd, Knowledge Dock Business Centre, University Way, London, E16 2RD | Tel: 0208 223 3081