

Anti-PKM antibody [1A7-G6-H6] (STJ99145)

STJ99145

GENERAL INFORMATION

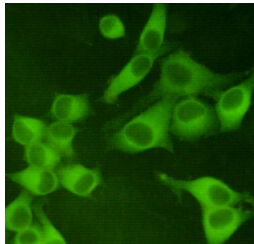
Product Type	Primary antibodies
Short Description	Mouse monoclonal antibody anti-Pyruvate Kinase Pkm is suitable for use in Western Blot, Immunofluorescence and Immunocytochemistry research applications.
Applications	WB, IF, ICC
Host/Source	Mouse
Reactivity	Human, Mouse, Rat, Monkey

PRODUCT PROPERTIES

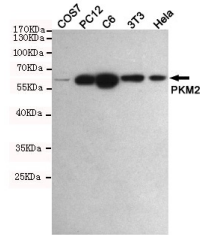
Clonality	Monoclonal
Clone ID	1A7-G6-H6
Concentration	1 mg/mL
Conjugation	Unconjugated
Purification	The antibody was isolated from ascitic fluid by immunoaffinity chromatography using antigens coupled to agarose beads.
Dilution Range	WB 1:1000 ICC 1:400
Formulation	PBS, 50% Glycerol, 0.5% BSA and 0.02% Sodium Azide.
Isotype	IgG1
Storage	Store at -20°C for up to 1 year from the date of receipt, and avoid repeat freeze-thaw cycles.
Instruction	

TARGET INFORMATION

Gene ID	5315
Gene Symbol	PKM
Uniprot ID	KPYM_HUMAN
Immunogen	Purified recombinant human PKM2 protein fragments expressed in E.coli.
Immunogen Region	
Specificity	PKM monoclonal antibody (Pyruvate Kinase Pkm) binds to endogenous Pyruvate Kinase Pkm.
Immunogen Sequence	



Immunocytochemistry staining of HeLa cells fixed with 4% Paraformaldehyde and using anti-PKM2 mouse mAb (dilution 1:400).



Western blot detection of PKM2 in COS7, PC12, C6, 3T3 and HeLa cell lysates using PKM2 mouse mAb (1:1000 diluted). Predicted band size: 60kDa. Observed band size: 60kDa.

This product is suitable for in-vitro studies under the RESEARCH USE ONLY [RUO] licence. This product must not be used as for diagnostic or other medical purposes.
St John's Laboratory Ltd, Knowledge Dock Business Centre, University Way, London, E16 2RD | Tel: 0208 223 3081