

Anti-LRRFIP1 antibody [4F3-D8-C9] (STJ99142)

STJ99142

GENERAL INFORMATION

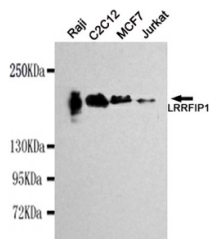
Product Type	Primary antibodies
Short Description	Mouse monoclonal antibody anti-Leucine-Rich Repeat Flightless-Interacting Protein 1 is suitable for use in Western Blot research applications.
Applications	WB
Host/Source	Mouse
Reactivity	Human, Mouse

PRODUCT PROPERTIES

Clonality	Monoclonal
Clone ID	4F3-D8-C9
Concentration	1 mg/mL
Conjugation	Unconjugated
Purification	The antibody was isolated from ascitic fluid by immunoaffinity chromatography using antigens coupled to agarose beads.
Dilution Range	WB 1:1000
Formulation	PBS, 50% Glycerol, 0.5% BSA and 0.02% Sodium Azide.
Isotype	IgG1
Storage Instruction	Store at -20°C for up to 1 year from the date of receipt, and avoid repeat freeze-thaw cycles.

TARGET INFORMATION

Gene ID	9208
Gene Symbol	LRRFIP1
Uniprot ID	LRRF1_HUMAN
Immunogen	Purified recombinant human LRRFIP1 protein fragments expressed in E.coli.
Immunogen Region	
Specificity	LRRFIP1 monoclonal antibody (Leucine-Rich Repeat Flightless-Interacting Protein 1) binds to endogenous Leucine-Rich Repeat Flightless-Interacting Protein 1.
Immunogen Sequence	



Western blot detection of LRRFIP1 in Raji, C2C12, MCF7 and Jurkat cell lysates using LRRFIP1 mouse mAb (1:1000 diluted). Predicted band size: 89KDa. Observed band size: 160KDa.

This product is suitable for in-vitro studies under the RESEARCH USE ONLY [RUO] licence. This product must not be used as for diagnostic or other medical purposes.
 St John's Laboratory Ltd, Knowledge Dock Business Centre, University Way, London, E16 2RD | Tel: 0208 223 3081