

Anti-PRKDC antibody [6D1-C11-F10] (STJ99134)

STJ99134

GENERAL INFORMATION

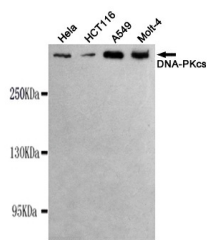
Product Type	Primary antibodies
Short Description	Mouse monoclonal antibody anti-Dna-Dependent Protein Kinase Catalytic Subunit is suitable for use in Western Blot, Immunoprecipitation, Immunocytochemistry and Immunohistochemistry research applications.
Applications	WB, IP, ICC, IHC
Host/Source	Mouse
Reactivity	Human

PRODUCT PROPERTIES

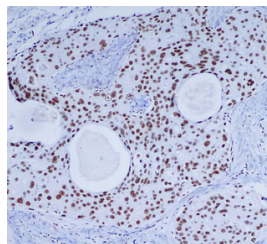
Clonality	Monoclonal
Clone ID	6D1-C11-F10
Concentration	1 mg/mL
Conjugation	Unconjugated
Purification	The antibody was isolated from ascitic fluid by immunoaffinity chromatography using antigens coupled to agarose beads.
Dilution	WB 1:1000
Range	ICC 1:100
Formulation	PBS, 50% Glycerol, 0.5% BSA and 0.02% Sodium Azide.
Isotype	IgG1
Storage	Store at -20°C for up to 1 year from the date of receipt, and avoid repeat freeze-thaw cycles.
Instruction	

TARGET INFORMATION

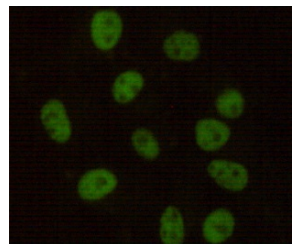
Gene ID	5591
Gene Symbol	PRKDC
Uniprot ID	PRKDC_HUMAN
Immunogen	Purified recombinant human DNA-PKcs protein fragments expressed in E.coli
Immunogen Region	
Specificity	PRKDC monoclonal antibody (Dna-Dependent Protein Kinase Catalytic Subunit) binds to endogenous Dna-Dependent Protein Kinase Catalytic Subunit.
Immunogen Sequence	



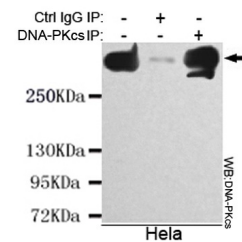
Western blot detection of DNA-PKcs in HeLa, Molt-4, A549 and HCT116 cell lysates using DNA-PKcs mouse mAb (1:1000 diluted). Predicted band size: 450kDa. Observed band size: 450kDa.



Immunohistochemical analysis of paraffin-embedded Breast cancer using DNA-PKcs mouse mAb (1/200 dilution). Antigen retrieval was performed by pressure cooking in citrate buffer (pH 6.0).



Immunocytochemistry stain of HeLa using DNA-PKcs mouse mAb (1:100).



Immunoprecipitation analysis of HeLa cell lysate using DNA-PKcs mouse mAb.

This product is suitable for in-vitro studies under the RESEARCH USE ONLY [RUO] licence. This product must not be used as for diagnostic or other medical purposes.
 St John's Laboratory Ltd, Knowledge Dock Business Centre, University Way, London, E16 2RD | Tel: 0208 223 3081