

## Anti-TUBB antibody [1E1-E8-H4] (STJ99133)

STJ99133

### GENERAL INFORMATION

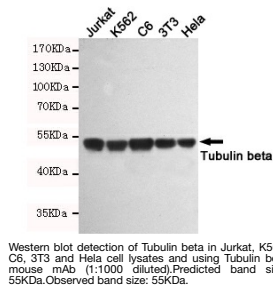
<b>Product Type</b>	Primary antibodies
<b>Short Description</b>	Mouse monoclonal antibody anti-Tubulin Beta Chain is suitable for use in Western Blot research applications.
<b>Applications</b>	WB
<b>Host/Source</b>	Mouse
<b>Reactivity</b>	Human, Mouse, Rat

### PRODUCT PROPERTIES

<b>Clonality</b>	Monoclonal
<b>Clone ID</b>	1E1-E8-H4
<b>Concentration</b>	1 mg/mL
<b>Conjugation</b>	Unconjugated
<b>Purification</b>	The antibody was isolated from ascitic fluid by immunoaffinity chromatography using antigens coupled to agarose beads.
<b>Dilution Range</b>	WB 1:1000
<b>Formulation</b>	PBS, 50% Glycerol, 0.5% BSA and 0.02% Sodium Azide.
<b>Isotype</b>	IgG1
<b>Storage Instruction</b>	Store at -20°C for up to 1 year from the date of receipt, and avoid repeat freeze-thaw cycles.

### TARGET INFORMATION

<b>Gene ID</b>	203068
<b>Gene Symbol</b>	TUBB
<b>Uniprot ID</b>	TBB5_HUMAN
<b>Immunogen</b>	Purified recombinant human Tubulin beta protein fragments expressed in E.coli.
<b>Immunogen Region</b>	
<b>Specificity</b>	TUBB monoclonal antibody (Tubulin Beta Chain) binds to endogenous Tubulin Beta Chain.
<b>Immunogen Sequence</b>	



This product is suitable for in-vitro studies under the RESEARCH USE ONLY [RUO] licence. This product must not be used as for diagnostic or other medical purposes.  
St John's Laboratory Ltd, Knowledge Dock Business Centre, University Way, London, E16 2RD | Tel: 0208 223 3081