

Anti-CHRD1 antibody [3H1-F6-A10] (STJ99125)

STJ99125

GENERAL INFORMATION

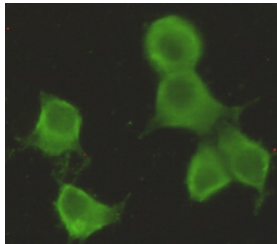
Product Type	Primary antibodies
Short Description	Mouse monoclonal antibody anti-Chordin-Like Protein 1 is suitable for use in Western Blot and Immunocytochemistry research applications.
Applications	WB, ICC
Host/Source	Mouse
Reactivity	Human

PRODUCT PROPERTIES

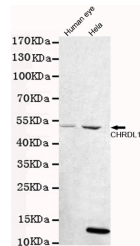
Clonality	Monoclonal
Clone ID	3H1-F6-A10
Concentration	1 mg/mL
Conjugation	Unconjugated
Purification	The antibody was isolated from ascitic fluid by immunoaffinity chromatography using antigens coupled to agarose beads.
Dilution Range	WB 1:1000 ICC 1:300
Formulation	PBS, 50% Glycerol, 0.5% BSA and 0.02% Sodium Azide.
Isotype	IgG1
Storage Instruction	Store at -20°C for up to 1 year from the date of receipt, and avoid repeat freeze-thaw cycles.

TARGET INFORMATION

Gene ID	91851
Gene Symbol	CHRD1
Uniprot ID	CRDL1_HUMAN
Immunogen	Purified recombinant human CHRD1 protein fragments expressed in E.coli.
Immunogen Region	
Specificity	CHRD1 monoclonal antibody (Chordin-Like Protein 1) binds to endogenous Chordin-Like Protein 1.
Immunogen Sequence	



Immunocytochemistry stain of HeLa using CHRD1 mouse mAb (1:300).



Western blot detection of CHRD1 in human eye and HeLa cell lysates using CHRD1 mouse mAb (1:1000 dilute). Predicted band size: 57kDa. Observed band size: 52kDa.

This product is suitable for in-vitro studies under the RESEARCH USE ONLY [RUO] licence. This product must not be used as for diagnostic or other medical purposes.
St John's Laboratory Ltd, Knowledge Dock Business Centre, University Way, London, E16 2RD | Tel: 0208 223 3081