

## Anti-SAFB antibody [2E8-E2-G6] (STJ99122)

STJ99122

### GENERAL INFORMATION

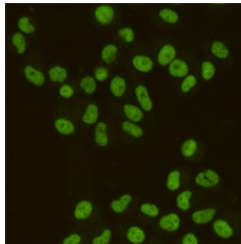
<b>Product Type</b>	Primary antibodies
<b>Short Description</b>	Mouse monoclonal antibody anti-Scaffold Attachment Factor B1 is suitable for use in Western Blot and Immunocytochemistry research applications.
<b>Applications</b>	WB, ICC
<b>Host/Source</b>	Mouse
<b>Reactivity</b>	Human

### PRODUCT PROPERTIES

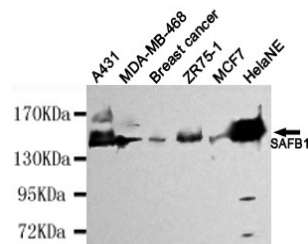
<b>Clonality</b>	Monoclonal
<b>Clone ID</b>	2E8-E2-G6
<b>Concentration</b>	1 mg/mL
<b>Conjugation</b>	Unconjugated
<b>Purification</b>	The antibody was isolated from ascitic fluid by immunoaffinity chromatography using antigens coupled to agarose beads.
<b>Dilution Range</b>	WB 1:1000 ICC 1:200
<b>Formulation</b>	PBS, 50% Glycerol, 0.5% BSA and 0.02% Sodium Azide.
<b>Isotype</b>	IgG1
<b>Storage</b>	Store at -20°C for up to 1 year from the date of receipt, and avoid repeat freeze-thaw cycles.
<b>Instruction</b>	

### TARGET INFORMATION

<b>Gene ID</b>	6294
<b>Gene Symbol</b>	SAFB
<b>Uniprot ID</b>	SAFB1_HUMAN
<b>Immunogen</b>	Purified recombinant human SAFB1 protein fragments expressed in E.coli.
<b>Immunogen Region</b>	
<b>Specificity</b>	SAFB monoclonal antibody (Scaffold Attachment Factor B1) binds to endogenous Scaffold Attachment Factor B1.
<b>Immunogen Sequence</b>	



Immunocytochemistry staining of HeLa cells fixed with 4% Paraformaldehyde and using SAFB1 mouse mAb (dilution 1:200).



Western blot detection of SAFB1 in HeLaNE, A431, MDA-MB-468, Breast cancer, ZR75-1 and MCF7 cell lysates using SAFB1 mouse mAb (1:4000 diluted). Predicted band size: 130kDa. Observed band size: 130kDa.

This product is suitable for in-vitro studies under the RESEARCH USE ONLY [RUO] licence. This product must not be used as for diagnostic or other medical purposes.  
St John's Laboratory Ltd, Knowledge Dock Business Centre, University Way, London, E16 2RD | Tel: 0208 223 3081