

## Anti-GSK3B antibody [2E6-D6-C12] (STJ99095)

STJ99095

### GENERAL INFORMATION

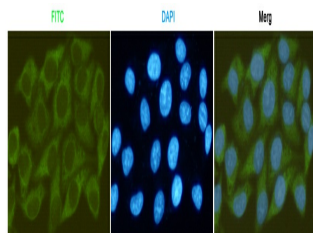
<b>Product Type</b>	Primary antibodies
<b>Short Description</b>	Mouse monoclonal antibody anti-Glycogen Synthase Kinase-3 Beta is suitable for use in Western Blot, Immunofluorescence, Immunocytochemistry and Immunoprecipitation research applications.
<b>Applications</b>	WB, IF, ICC, IP
<b>Host/Source</b>	Mouse
<b>Reactivity</b>	Human, Mouse

### PRODUCT PROPERTIES

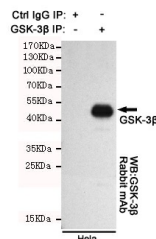
<b>Clonality</b>	Monoclonal
<b>Clone ID</b>	2E6-D6-C12
<b>Concentration</b>	1 mg/mL
<b>Conjugation</b>	Unconjugated
<b>Purification</b>	The antibody was isolated from ascitic fluid by immunoaffinity chromatography using antigens coupled to agarose beads.
<b>Dilution</b>	WB 1:1000
<b>Range</b>	ICC 1:200
<b>Formulation</b>	PBS, 50% Glycerol, 0.5% BSA and 0.02% Sodium Azide.
<b>Isotype</b>	IgG2a
<b>Storage</b>	Store at -20°C for up to 1 year from the date of receipt, and avoid repeat freeze-thaw cycles.
<b>Instruction</b>	

### TARGET INFORMATION

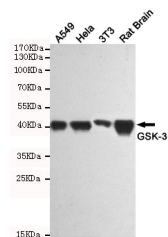
<b>Gene ID</b>	2932
<b>Gene Symbol</b>	GSK3B
<b>Uniprot ID</b>	GSK3B_HUMAN
<b>Immunogen</b>	Purified recombinant GSK-3 Beta protein fragments expressed in E.coli.
<b>Immunogen Region</b>	
<b>Specificity</b>	GSK3B monoclonal antibody (Glycogen Synthase Kinase-3 Beta) binds to endogenous Glycogen Synthase Kinase-3 Beta.
<b>Immunogen Sequence</b>	



Immunofluorescence staining of HeLa cells fixed with 20°C Methanol and using GSK-3 Beta mouse mAb (dilution 1:200).



Immunoprecipitation analysis of HeLa cell lysates using GSK-3 Beta. GSK-3 Beta Rabbit mAb was used for the western blot analysis (1:1000 diluted).



Western blot analysis of extracts from A549, HeLa, 3T3 and Rat Brain cell lysates using GSK-3 Beta mouse mAb (1:1000 diluted). Predicted band size: 46 kDa. Observed band size: 46 kDa.

This product is suitable for in-vitro studies under the RESEARCH USE ONLY [RUO] licence. This product must not be used as for diagnostic or other medical purposes.  
 St John's Laboratory Ltd, Knowledge Dock Business Centre, University Way, London, E16 2RD | Tel: 0208 223 3081