

## Anti-PPP1CA antibody [1H1-F7-D8] (STJ99090)

STJ99090

### GENERAL INFORMATION

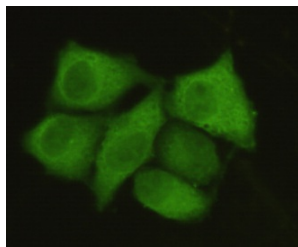
<b>Product Type</b>	Primary antibodies
<b>Short Description</b>	Mouse monoclonal antibody anti-Serine/Threonine-Protein Phosphatase Pp1-Alpha Catalytic Subunit is suitable for use in Western Blot and Immunocytochemistry research applications.
<b>Applications</b>	WB, ICC
<b>Host/Source</b>	Mouse
<b>Reactivity</b>	Human

### PRODUCT PROPERTIES

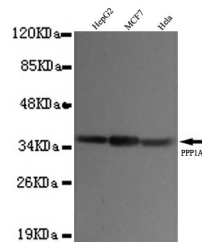
<b>Clonality</b>	Monoclonal
<b>Clone ID</b>	1H1-F7-D8
<b>Concentration</b>	1 mg/mL
<b>Conjugation</b>	Unconjugated
<b>Purification</b>	The antibody was isolated from ascitic fluid by immunoaffinity chromatography using antigens coupled to agarose beads.
<b>Dilution Range</b>	WB 1:1000 ICC 1:50
<b>Formulation</b>	PBS, 50% Glycerol, 0.5% BSA and 0.02% Sodium Azide.
<b>Isotype</b>	IgG1
<b>Storage</b>	Store at -20°C for up to 1 year from the date of receipt, and avoid repeat freeze-thaw cycles.
<b>Instruction</b>	

### TARGET INFORMATION

<b>Gene ID</b>	5499
<b>Gene Symbol</b>	PPP1CA
<b>Uniprot ID</b>	PP1A_HUMAN
<b>Immunogen</b>	Purified recombinant human PPP1A protein fragments expressed in E.coli.
<b>Immunogen Region</b>	
<b>Specificity</b>	PPP1CA monoclonal antibody (Serine/Threonine-Protein Phosphatase Pp1-Alpha Catalytic Subunit) binds to endogenous Serine/Threonine-Protein Phosphatase Pp1 -Alpha Catalytic Subunit.
<b>Immunogen Sequence</b>	



Immunocytochemistry of HeLa cells using anti-PPP1A mouse mAb diluted 1:50.



Western blot detection of PPP1A in HepG2, MCF7 and HeLa cell lysates using PPP1A mouse mAb (1:1000 diluted). Predicted band size: 37KDa. Observed band size: 37KDa.

This product is suitable for in-vitro studies under the RESEARCH USE ONLY [RUO] licence. This product must not be used as for diagnostic or other medical purposes.  
St John's Laboratory Ltd, Knowledge Dock Business Centre, University Way, London, E16 2RD | Tel: 0208 223 3081