

Anti-PPP1CC antibody [2F2-A3-H10] (STJ99089)

STJ99089

GENERAL INFORMATION

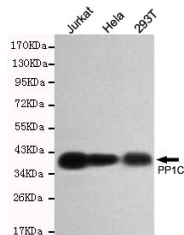
Product Type	Primary antibodies
Short Description	Mouse monoclonal antibody anti-Serine/Threonine-Protein Phosphatase Pp1-Gamma Catalytic Subunit is suitable for use in Western Blot research applications.
Applications	WB
Host/Source	Mouse
Reactivity	Human

PRODUCT PROPERTIES

Clonality	Monoclonal
Clone ID	2F2-A3-H10
Concentration	1 mg/mL
Conjugation	Unconjugated
Purification	The antibody was isolated from ascitic fluid by immunoaffinity chromatography using antigens coupled to agarose beads.
Dilution Range	WB 1:500
Formulation	PBS, 50% Glycerol, 0.5% BSA and 0.02% Sodium Azide.
Isotype	IgG2b
Storage Instruction	Store at -20°C for up to 1 year from the date of receipt, and avoid repeat freeze-thaw cycles.

TARGET INFORMATION

Gene ID	5501
Gene Symbol	PPP1CC
Uniprot ID	PP1G_HUMAN
Immunogen	Purified recombinant human PP1C protein fragments expressed in E.coli.
Immunogen Region	
Specificity	PPP1CC monoclonal antibody (Serine/Threonine-Protein Phosphatase Pp1-Gamma Catalytic Subunit) binds to endogenous Serine/Threonine-Protein Phosphatase Pp1-Gamma Catalytic Subunit.
Immunogen Sequence	



Western blot detection of PPP1CC in HeLa, 293T and Jurkat cell lysates using PPP1CC mouse mAb (1:500 diluted). Predicted band size: 38kDa. Observed band size: 38kDa.

This product is suitable for in-vitro studies under the RESEARCH USE ONLY [RUO] licence. This product must not be used as for diagnostic or other medical purposes.
 St John's Laboratory Ltd, Knowledge Dock Business Centre, University Way, London, E16 2RD | Tel: 0208 223 3081