

Anti-PPP2CB antibody [2G2-H6-G11-E8] (STJ99088)

STJ99088

GENERAL INFORMATION

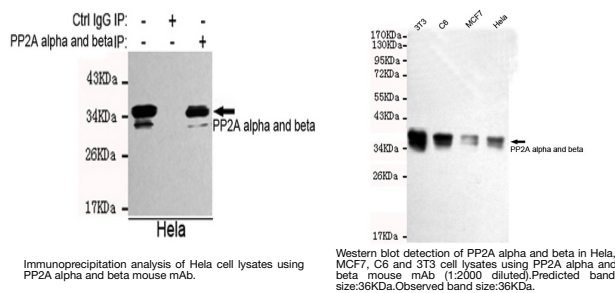
| | |
|--------------------------|--|
| Product Type | Primary antibodies |
| Short Description | Mouse monoclonal antibody anti-Serine/Threonine-Protein Phosphatase 2a Catalytic Subunit Beta Isoform is suitable for use in Western Blot and Immunoprecipitation research applications. |
| Applications | WB, IP |
| Host/Source | Mouse |
| Reactivity | Human, Mouse, Rat |

PRODUCT PROPERTIES

| | |
|----------------------|--|
| Clonality | Monoclonal |
| Clone ID | 2G2-H6-G11-E8 |
| Concentration | 1 mg/mL |
| Conjugation | Unconjugated |
| Purification | The antibody was isolated from ascitic fluid by immunoaffinity chromatography using antigens coupled to agarose beads. |
| Dilution | WB 1:2000 |
| Range | |
| Formulation | PBS, 50% Glycerol, 0.5% BSA and 0.02% Sodium Azide. |
| Isotype | IgG2a |
| Storage | Store at -20°C for up to 1 year from the date of receipt, and avoid repeat freeze-thaw cycles. |
| Instruction | |

TARGET INFORMATION

| | |
|---------------------------|---|
| Gene ID | 5516 |
| Gene Symbol | PPP2CB |
| Uniprot ID | PP2AB_HUMAN |
| Immunogen | Purified recombinant human full length PP2A beta protein expressed in E.coli |
| Region | |
| Specificity | PPP2CB monoclonal antibody (Serine/Threonine-Protein Phosphatase 2a Catalytic Subunit Beta Isoform) binds to endogenous Serine/Threonine-Protein Phosphatase 2a Catalytic Subunit Beta Isoform. |
| Immunogen Sequence | |



This product is suitable for in-vitro studies under the RESEARCH USE ONLY [RUO] licence. This product must not be used as for diagnostic or other medical purposes.
 St John's Laboratory Ltd, Knowledge Dock Business Centre, University Way, London, E16 2RD | Tel: 0208 223 3081