

Anti-ALB antibody [7D1-C10-E7] (STJ99078)

STJ99078

GENERAL INFORMATION

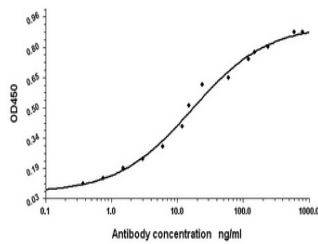
Product Type	Primary antibodies
Short Description	Mouse monoclonal antibody anti-Albumin is suitable for use in Western Blot and ELISA research applications.
Applications	WB, ELISA
Host/Source	Mouse
Reactivity	Human

PRODUCT PROPERTIES

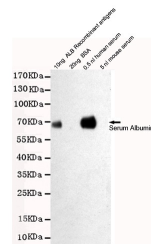
Clonality	Monoclonal
Clone ID	7D1-C10-E7
Concentration	1 mg/mL
Conjugation	Unconjugated
Purification	The antibody was isolated from ascitic fluid by immunoaffinity chromatography using antigens coupled to agarose beads.
Dilution Range	WB 1:2000
Formulation	PBS, 50% Glycerol, 0.5% BSA and 0.02% Sodium Azide.
Isotype	IgG1
Storage Instruction	Store at -20°C for up to 1 year from the date of receipt, and avoid repeat freeze-thaw cycles.

TARGET INFORMATION

Gene ID	213
Gene Symbol	ALB
Uniprot ID	ALBU_HUMAN
Immunogen	Purified Human serum albumin.
Immunogen Region	
Specificity	ALB monoclonal antibody (Albumin) binds to endogenous Albumin.
Immunogen Sequence	



Indirect ELISA assay for anti-Human Serum Albumin mouse mAb. Antigen coating concentration: 8ug/ml.



Western blot detection of Human Serum Albumin in 0.5µl human serum and 10ng ALB Recombinant antigens cell lysates using Human Serum Albumin mouse mAb (1:2000 diluted). Predicted band size: 67kDa. Observed band size: 67kDa.

This product is suitable for in-vitro studies under the RESEARCH USE ONLY [RUO] licence. This product must not be used as for diagnostic or other medical purposes.
 St John's Laboratory Ltd, Knowledge Dock Business Centre, University Way, London, E16 2RD | Tel: 0208 223 3081