

Anti-ALB antibody [1A8-C5-B4] (STJ99077)

STJ99077

GENERAL INFORMATION

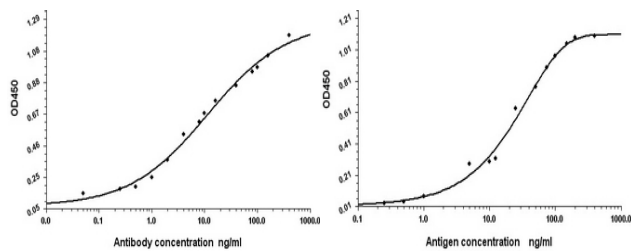
Product Type	Primary antibodies
Short Description	Mouse monoclonal antibody anti-Albumin is suitable for use in Western Blot and ELISA research applications.
Applications	WB, ELISA
Host/Source	Mouse
Reactivity	Human

PRODUCT PROPERTIES

Clonality	Monoclonal
Clone ID	1A8-C5-B4
Concentration	1 mg/mL
Conjugation	Unconjugated
Purification	The antibody was isolated from ascitic fluid by immunoaffinity chromatography using antigens coupled to agarose beads.
Dilution Range	WB 1:1000
Formulation	PBS, 50% Glycerol, 0.5% BSA and 0.02% Sodium Azide.
Isotype	IgG1
Storage Instruction	Store at -20°C for up to 1 year from the date of receipt, and avoid repeat freeze-thaw cycles.

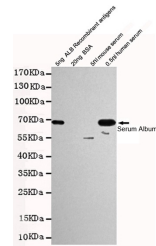
TARGET INFORMATION

Gene ID	213
Gene Symbol	ALB
Uniprot ID	ALBU_HUMAN
Immunogen	Purified Human serum albumin.
Immunogen Region	
Specificity	ALB monoclonal antibody (Albumin) binds to endogenous Albumin.
Immunogen Sequence	



Indirect ELISA assay for anti-Human Serum Albumin mouse mAb. Antigen coating concentration: 8ug/ml.

Standard Curve for Human Serum Albumin (Analyte: Human Serum Albumin protein 1) : using Capture Antibody Mouse monoclonal [1A8-C5-B4] to Human Serum Albumin at 8 µg/ml and Detector Antibody Rabbit polyclonal antiserum to Human Serum Albumin.



Western blot detection of Human Serum Albumin in 0.5ml human serum and 5ng ALB Recombinant antigens cell lysates using Human Serum Albumin mouse mAb (1:1000 diluted). Predicted band size: 67kDa. Observed band size: 67kDa.

This product is suitable for in-vitro studies under the RESEARCH USE ONLY [RUO] licence. This product must not be used as for diagnostic or other medical purposes.
St John's Laboratory Ltd, Knowledge Dock Business Centre, University Way, London, E16 2RD | Tel: 0208 223 3081