

Anti-CHD3 antibody (C-Term) [7F6-G2-E5] (STJ99071)

STJ99071

GENERAL INFORMATION

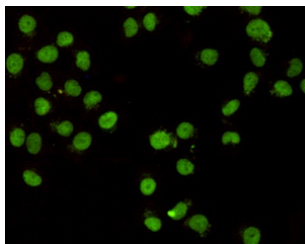
| | |
|--------------------------|---|
| Product Type | Primary antibodies |
| Short Description | Mouse monoclonal antibody anti-Chromodomain-Helicase-Dna-Binding Protein 3 (C-Term) is suitable for use in Western Blot, Immunocytochemistry and Immunoprecipitation research applications. |
| Applications | WB, ICC, IP |
| Host/Source | Mouse |
| Reactivity | Human, Mouse, Rat |

PRODUCT PROPERTIES

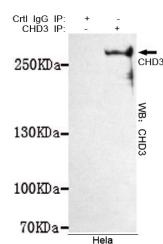
| | |
|----------------------|--|
| Clonality | Monoclonal |
| Clone ID | 7F6-G2-E5 |
| Concentration | 1 mg/mL |
| Conjugation | Unconjugated |
| Purification | The antibody was isolated from ascitic fluid by immunoaffinity chromatography using antigens coupled to agarose beads. |
| Dilution | WB 1:1000 |
| Range | ICC 1:400 |
| Formulation | PBS, 50% Glycerol, 0.5% BSA and 0.02% Sodium Azide. |
| Isotype | IgG1 |
| Storage | Store at -20°C for up to 1 year from the date of receipt, and avoid repeat freeze-thaw cycles. |
| Instruction | |

TARGET INFORMATION

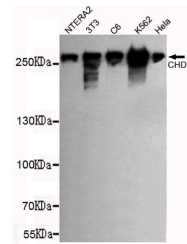
| | |
|---------------------------|---|
| Gene ID | 1107 |
| Gene Symbol | CHD3 |
| Uniprot ID | CHD3_HUMAN |
| Immunogen | Purified recombinant human CHD3 (C-terminus) protein fragments expressed in E.coli. |
| Immunogen Region | C-Term |
| Specificity | CHD3 monoclonal antibody (Chromodomain-Helicase-Dna-Binding Protein 3) binds to endogenous Chromodomain-Helicase-Dna-Binding Protein 3 at the amino acid region C-Term. |
| Immunogen Sequence | |



Immunocytochemistry staining of HeLa cells fixed with 20°C Methanol and using CHD3 (C-terminus) mouse mAb (dilution 1:400).



Immunoprecipitation analysis of HeLa cell lysates using CHD3 mouse mAb.



Western blot detection of CHD3 (C-terminus) in NTERA2, 3T3, C6, K562 and HeLa cell lysates using CHD3 (C-terminus) mouse mAb (1:1000 diluted). Predicted band size: 260 kDa. Observed band size: 260 kDa.

This product is suitable for in-vitro studies under the RESEARCH USE ONLY [RUO] licence. This product must not be used as for diagnostic or other medical purposes.
St John's Laboratory Ltd, Knowledge Dock Business Centre, University Way, London, E16 2RD | Tel: 0208 223 3081