

Anti-EPCAM antibody [1D5-B6-B10] (STJ99064)

STJ99064

GENERAL INFORMATION

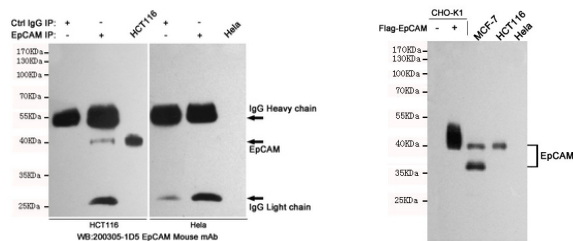
Product Type	Primary antibodies
Short Description	Mouse monoclonal antibody anti-Epithelial Cell Adhesion Molecule is suitable for use in Western Blot and Immunoprecipitation research applications.
Applications	WB, IP
Host/Source	Mouse
Reactivity	Human

PRODUCT PROPERTIES

Clonality	Monoclonal
Clone ID	1D5-B6-B10
Concentration	1 mg/mL
Conjugation	Unconjugated
Purification	The antibody was isolated from ascitic fluid by immunoaffinity chromatography using antigens coupled to agarose beads.
Dilution Range	WB 1:1000
Formulation	PBS, 50% Glycerol, 0.5% BSA and 0.02% Sodium Azide.
Isotype	IgG1
Storage Instruction	Store at -20°C for up to 1 year from the date of receipt, and avoid repeat freeze-thaw cycles.

TARGET INFORMATION

Gene ID	4072
Gene Symbol	EPCAM
Uniprot ID	EPCAM_HUMAN
Immunogen	Purified recombinant EpCAM protein fragments expressed in E.coli.
Region	
Specificity	EPCAM monoclonal antibody (Epithelial Cell Adhesion Molecule) binds to endogenous Epithelial Cell Adhesion Molecule.
Immunogen Sequence	



Immunoprecipitation analysis of HCT116 and HeLa cell lysates using EpCAM.

Western blot analysis of extracts from CHO-K1, CHO-K1 transfected by Flag-EpCAM, MCF7 (EpCAM positive), HCT116 (EpCAM positive) and HeLa (EpCAM negative) cell lysates using EpCAM mouse mAb (1:1000 diluted). Predicted band size: 39kDa. Observed band size: 39/35kDa.

This product is suitable for in-vitro studies under the RESEARCH USE ONLY [RUO] licence. This product must not be used as for diagnostic or other medical purposes.
 St John's Laboratory Ltd, Knowledge Dock Business Centre, University Way, London, E16 2RD | Tel: 0208 223 3081