

## Anti-PDHA1 antibody [3H2-F8-B5] (STJ99056)

STJ99056

### GENERAL INFORMATION

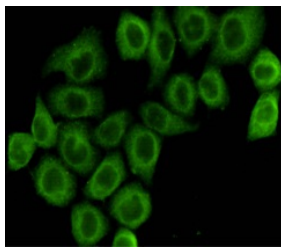
<b>Product Type</b>	Primary antibodies
<b>Short Description</b>	Mouse monoclonal antibody anti-Pyruvate Dehydrogenase E1 Component Subunit Alpha-Somatic Form-Mitochondrial is suitable for use in Western Blot and Immunocytochemistry research applications.
<b>Applications</b>	WB, ICC
<b>Host/Source</b>	Mouse
<b>Reactivity</b>	Human, Mouse

### PRODUCT PROPERTIES

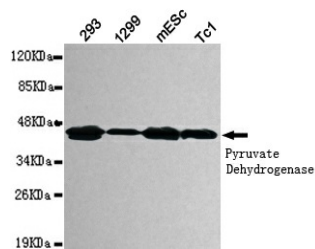
<b>Clonality</b>	Monoclonal
<b>Clone ID</b>	3H2-F8-B5
<b>Concentration</b>	1 mg/mL
<b>Conjugation</b>	Unconjugated
<b>Purification</b>	The antibody was isolated from ascitic fluid by immunoaffinity chromatography using antigens coupled to agarose beads.
<b>Dilution</b>	WB 1:1000
<b>Range</b>	ICC 1:100
<b>Formulation</b>	PBS, 50% Glycerol, 0.5% BSA and 0.02% Sodium Azide.
<b>Isotype</b>	IgG1
<b>Storage</b>	Store at -20°C for up to 1 year from the date of receipt, and avoid repeat freeze-thaw cycles.
<b>Instruction</b>	

### TARGET INFORMATION

<b>Gene ID</b>	5160
<b>Gene Symbol</b>	PDHA1
<b>Uniprot ID</b>	ODPA_HUMAN
<b>Immunogen</b>	Purified recombinant human Pyruvate Dehydrogenase protein fragments expressed in E.coli.
<b>Immunogen Region</b>	
<b>Specificity</b>	PDHA1 monoclonal antibody (Pyruvate Dehydrogenase E1 Component Subunit Alpha-Somatic Form-Mitochondrial) binds to endogenous Pyruvate Dehydrogenase E1 Component Subunit Alpha-Somatic Form-Mitochondrial.
<b>Immunogen Sequence</b>	



Immunocytochemistry staining of HeLa cells fixed with 4% Paraformaldehyde and using anti-pyruvate dehydrogenase (lipocamide) alpha 1 mouse mAb (dilution 1:100).



Western blot detection of pyruvate dehydrogenase (lipocamide) alpha 1 in 293, 1299, mEsc and Tc1 cell lysates using pyruvate dehydrogenase (lipocamide) alpha 1 mouse mAb (1:1000 diluted). Predicted band size: 43kDa. Observed band size: 43kDa.

This product is suitable for in-vitro studies under the RESEARCH USE ONLY [RUO] licence. This product must not be used as for diagnostic or other medical purposes.  
 St John's Laboratory Ltd, Knowledge Dock Business Centre, University Way, London, E16 2RD | Tel: 0208 223 3081