

Anti-SMC1A antibody (C-Term) [4C5-C8-A11] (STJ99054)

STJ99054

GENERAL INFORMATION

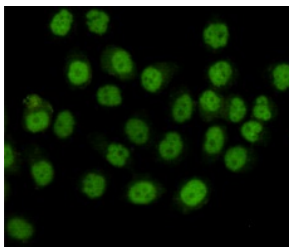
Product Type	Primary antibodies
Short Description	Mouse monoclonal antibody anti-Structural Maintenance Of Chromosomes Protein 1a (C-Term) is suitable for use in Western Blot and Immunocytochemistry research applications.
Applications	WB, ICC
Host/Source	Mouse
Reactivity	Human

PRODUCT PROPERTIES

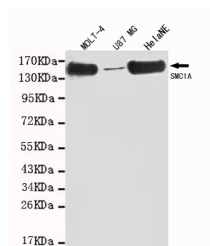
Clonality	Monoclonal
Clone ID	4C5-C8-A11
Concentration	1 mg/mL
Conjugation	Unconjugated
Purification	The antibody was isolated from ascitic fluid by immunoaffinity chromatography using antigens coupled to agarose beads.
Dilution Range	WB 1:1000 ICC 1:100
Formulation	PBS, 50% Glycerol, 0.5% BSA and 0.02% Sodium Azide.
Isotype	IgG1
Storage	Store at -20°C for up to 1 year from the date of receipt, and avoid repeat freeze-thaw cycles.
Instruction	

TARGET INFORMATION

Gene ID	8243
Gene Symbol	SMC1A
Uniprot ID	SMC1A_HUMAN
Immunogen	Purified recombinant human SMC1A (C-term.) protein fragments expressed in E.coli.
Immunogen Region	C-Term
Specificity	SMC1A monoclonal antibody (Structural Maintenance Of Chromosomes Protein 1a) binds to endogenous Structural Maintenance Of Chromosomes Protein 1a at the amino acid region C-Term.
Immunogen Sequence	



Immunocytochemistry staining of HeLa cells fixed with 4% Paraformaldehyde and using anti-SMC1A mouse mAb (dilution 1:100).



Western blot detection of SMC1A (C-term) in MOLT-4, U87 MG and HeLaNE cell lysates using SMC1A (N-terminus) mouse mAb (1:1000 diluted). Predicted band size: 143kDa. Observed band size: 143kDa.

This product is suitable for in-vitro studies under the RESEARCH USE ONLY [RUO] licence. This product must not be used as for diagnostic or other medical purposes.
St John's Laboratory Ltd, Knowledge Dock Business Centre, University Way, London, E16 2RD | Tel: 0208 223 3081