

Anti-SMC1A antibody (N-Term) [8E6-A4-F3] (STJ99053)

STJ99053

GENERAL INFORMATION

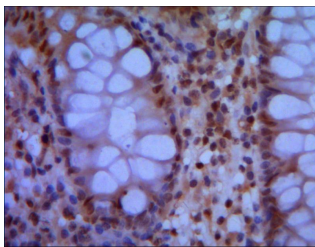
Product Type	Primary antibodies
Short Description	Mouse monoclonal antibody anti-Structural Maintenance Of Chromosomes Protein 1a (N-Term) is suitable for use in Western Blot, Immunohistochemistry and Flow Cytometry research applications.
Applications	WB, IHC, FC
Host/Source	Mouse
Reactivity	Human

PRODUCT PROPERTIES

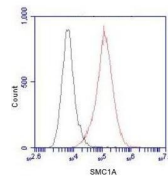
Clonality	Monoclonal
Clone ID	8E6-A4-F3
Concentration	1 mg/mL
Conjugation	Unconjugated
Purification	The antibody was isolated from ascitic fluid by immunoaffinity chromatography using antigens coupled to agarose beads.
Dilution	WB 1:1000
Range	FCM 1:100
Formulation	PBS, 50% Glycerol, 0.5% BSA and 0.02% Sodium Azide.
Isotype	IgG1
Storage	Store at -20°C for up to 1 year from the date of receipt, and avoid repeat freeze-thaw cycles.
Instruction	

TARGET INFORMATION

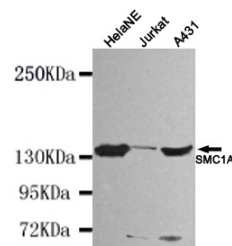
Gene ID	8243
Gene Symbol	SMC1A
Uniprot ID	SMC1A_HUMAN
Immunogen	Purified recombinant human SMC1A (N-terminus) protein fragments expressed in E.coli.
Immunogen Region	N-Term
Specificity	SMC1A monoclonal antibody (Structural Maintenance Of Chromosomes Protein 1a) binds to endogenous Structural Maintenance Of Chromosomes Protein 1a at the amino acid region N-Term.
Immunogen Sequence	



IHC of paraffin-embedded human colon using anti-SMC1A (N-terminus) mouse mAb diluted 1/500-1/1000.



Flow Cytometry analysis of HeLa cells stained with SMC1A (N-terminus) (red, 1/100 dilution) - followed by FITC-conjugated goat anti-mouse IgG. Black line histogram represents the isotype control, normal mouse IgG.



Western blot detection of SMC1A (N-terminus) in HeLaNE, Jurkat and A431 cell lysates using SMC1A (N-terminus) mouse mAb (1:1000 diluted). Predicted band size: 143KDa. Observed band size: 143KDa.

This product is suitable for in-vitro studies under the RESEARCH USE ONLY [RUO] licence. This product must not be used as for diagnostic or other medical purposes.
 St John's Laboratory Ltd, Knowledge Dock Business Centre, University Way, London, E16 2RD | Tel: 0208 223 3081