

Anti-PPP4C antibody [2F11-D10-G4] (STJ99049)

STJ99049

GENERAL INFORMATION

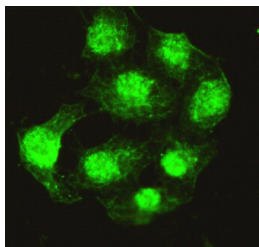
Product Type	Primary antibodies
Short Description	Mouse monoclonal antibody anti-Serine/Threonine-Protein Phosphatase 4 Catalytic Subunit is suitable for use in Western Blot, Immunohistochemistry and Immunocytochemistry research applications.
Applications	WB, IHC, ICC
Host/Source	Mouse
Reactivity	Human

PRODUCT PROPERTIES

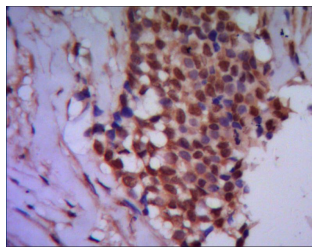
Clonality	Monoclonal
Clone ID	2F11-D10-G4
Concentration	1 mg/mL
Conjugation	Unconjugated
Purification	The antibody was isolated from ascitic fluid by immunoaffinity chromatography using antigens coupled to agarose beads.
Dilution	WB 1:200
Range	ICC 1:200
Formulation	PBS, 50% Glycerol, 0.5% BSA and 0.02% Sodium Azide.
Isotype	IgG2a
Storage	Store at -20°C for up to 1 year from the date of receipt, and avoid repeat freeze-thaw cycles.
Instruction	

TARGET INFORMATION

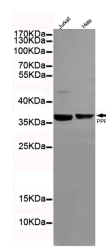
Gene ID	5531
Gene Symbol	PPP4C
Uniprot ID	PP4C_HUMAN
Immunogen	Purified recombinant human Protein Phosphatase 4C protein fragments expressed in E.coli.
Immunogen Region	
Specificity	PPP4C monoclonal antibody (Serine/Threonine-Protein Phosphatase 4 Catalytic Subunit) binds to endogenous Serine/Threonine-Protein Phosphatase 4 Catalytic Subunit.
Immunogen Sequence	



Immunocytochemistry of HeLa cells using anti-Protein Phosphatase 4C mouse mAb diluted 1:200.



IHC of paraffin-embedded human breast cancer using anti-Protein Phosphatase 4C mouse mAb diluted 1/500-1/1000.



Western blot detection of Protein Phosphatase 4C in HeLa and Jurkat cell lysates using Protein Phosphatase 4C mouse mAb (1:200 diluted). Predicted band size: 34kDa. Observed band size: 34kDa.