

Anti-PPP1CA antibody [1C11-C10-H5-E9] (STJ99048)

STJ99048

GENERAL INFORMATION

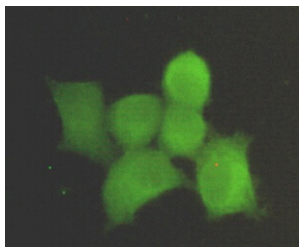
Product Type	Primary antibodies
Short Description	Mouse monoclonal antibody anti-Serine/Threonine-Protein Phosphatase Pp1-Alpha Catalytic Subunit is suitable for use in Western Blot, Immunohistochemistry and Immunocytochemistry research applications.
Applications	WB, IHC, ICC
Host/Source	Mouse
Reactivity	Human

PRODUCT PROPERTIES

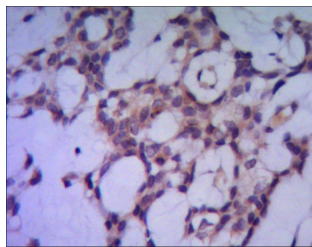
Clonality	Monoclonal
Clone ID	1C11-C10-H5-E9
Concentration	1 mg/mL
Conjugation	Unconjugated
Purification	The antibody was isolated from ascitic fluid by immunoaffinity chromatography using antigens coupled to agarose beads.
Dilution	WB 1:1000
Range	ICC 1:300
Formulation	PBS, 50% Glycerol, 0.5% BSA and 0.02% Sodium Azide.
Isotype	IgG1
Storage	Store at -20°C for up to 1 year from the date of receipt, and avoid repeat freeze-thaw cycles.
Instruction	

TARGET INFORMATION

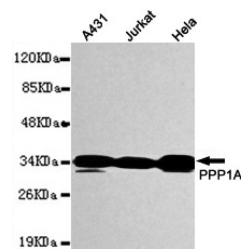
Gene ID	5499
Gene Symbol	PPP1CA
Uniprot ID	PP1A_HUMAN
Immunogen	Purified recombinant human PPP1A protein fragments expressed in E.coli.
Immunogen Region	
Specificity	PPP1CA monoclonal antibody (Serine/Threonine-Protein Phosphatase Pp1-Alpha Catalytic Subunit) binds to endogenous Serine/Threonine-Protein Phosphatase Pp1-Alpha Catalytic Subunit.
Immunogen Sequence	



Immunocytochemistry stain of HeLa using PPP1A mouse mAb (1:300).



IHC of paraffin-embedded human breast cancer using anti-PPP1A mouse mAb diluted 1/500-1/1000.



Western blot detection of PPP1A in MCF7, K562, HeLa, HEPG2 and Jurkat whole cell lysates using PPP1A mouse mAb (1:1000 diluted). Predicted band size: 38KDa. Observed band size: 38KDa.

This product is suitable for in-vitro studies under the RESEARCH USE ONLY [RUO] licence. This product must not be used as for diagnostic or other medical purposes.
 St John's Laboratory Ltd, Knowledge Dock Business Centre, University Way, London, E16 2RD | Tel: 0208 223 3081