

Anti-KLF4 antibody [3B3-B11-E6] (STJ99041)

STJ99041

GENERAL INFORMATION

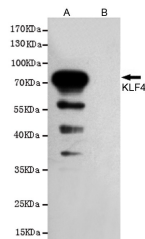
Product Type	Primary antibodies
Short Description	Mouse monoclonal antibody anti-Krueppel-Like Factor 4 is suitable for use in Western Blot research applications.
Applications	WB
Host/Source	Mouse
Reactivity	Human

PRODUCT PROPERTIES

Clonality	Monoclonal
Clone ID	3B3-B11-E6
Concentration	1 mg/mL
Conjugation	Unconjugated
Purification	The antibody was isolated from ascitic fluid by immunoaffinity chromatography using antigens coupled to agarose beads.
Dilution Range	WB 1:1000
Formulation	PBS, 50% Glycerol, 0.5% BSA and 0.02% Sodium Azide.
Isotype	IgG2b
Storage Instruction	Store at -20°C for up to 1 year from the date of receipt, and avoid repeat freeze-thaw cycles.

TARGET INFORMATION

Gene ID	9314
Gene Symbol	KLF4
Uniprot ID	KLF4_HUMAN
Immunogen	Purified recombinant mouse KLF4 protein fragments expressed in E.coli.
Immunogen Region	
Specificity	
Immunogen Sequence	



Western blot analysis of extracts from CHO-K1 cells, transfected with pcDNA3.1-Hygro (+) -mKLF4-Flag construct (A) or transfected with pcDNA3.1-Hygro (+) -Flag vector (B) , using KLF4 mouse mAb (1:1000 diluted). Predicted band size:55/65kDa.Observed band size:55/65kDa.

This product is suitable for in-vitro studies under the RESEARCH USE ONLY [RUO] licence. This product must not be used as for diagnostic or other medical purposes.
 St John's Laboratory Ltd, Knowledge Dock Business Centre, University Way, London, E16 2RD | Tel: 0208 223 3081