

Anti-CBX3 antibody [5G10-F7-A12] (STJ99038)

STJ99038

GENERAL INFORMATION

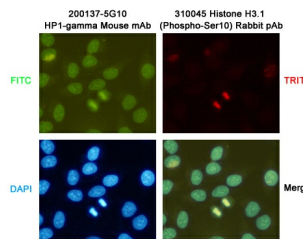
Product Type	Primary antibodies
Short Description	Mouse monoclonal antibody anti-Chromobox Protein Homolog 3 is suitable for use in Western Blot, Immunofluorescence, Immunocytochemistry, Immunoprecipitation and Immunohistochemistry research applications.
Applications	WB, IF, ICC, IP, IHC
Host/Source	Mouse
Reactivity	Mouse, Human, Simian, Hamster, Rat

PRODUCT PROPERTIES

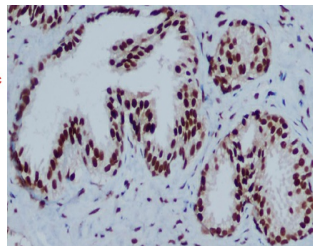
Clonality	Monoclonal
Clone ID	5G10-F7-A12
Concentration	1 mg/mL
Conjugation	Unconjugated
Purification	The antibody was isolated from ascitic fluid by immunoaffinity chromatography using antigens coupled to agarose beads.
Dilution	WB 1:1000
Range	ICC 1:200
Formulation	PBS, 50% Glycerol, 0.5% BSA and 0.02% Sodium Azide.
Isotype	IgG1
Storage	Store at -20°C for up to 1 year from the date of receipt, and avoid repeat freeze-thaw cycles.
Instruction	

TARGET INFORMATION

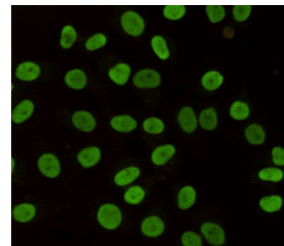
Gene ID	11335
Gene Symbol	CBX3
Uniprot ID	CBX3_HUMAN
Immunogen	Purified recombinant human HP1-gamma protein fragments expressed in E.coli.
Immunogen Region	
Specificity	CBX3 monoclonal antibody (Chromobox Protein Homolog 3) binds to endogenous Chromobox Protein Homolog 3.
Immunogen Sequence	



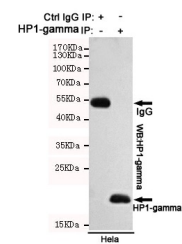
Immunocytochemistry staining of HeLa cells fixed with 20°C Methanol and using HP1-gamma (200137-5G10, dilution 1:200) mouse mAb (green) and Histone H3.1 (Phospho-Ser10) (310045, dilution 1:200) Rabbit pAb (red). DAPI was used to stain nucleus (blue).



Immunohistochemical analysis of paraffin-embedded Prostate Cancer using HP1-gamma mouse mAb (1/200 dilution). Antigen retrieval was performed by pressure cooking in citrate buffer (pH 6.0).



Immunocytochemistry staining of HeLa cells fixed with 4% Paraformaldehyde and using anti-HP1-gamma mouse mAb (dilution 1:200).



Immunoprecipitation analysis of HeLa cell lysates using HP1-gamma mouse mAb.