

Anti-KIF11 antibody [4H3-1F12] (STJ99033)

STJ99033

GENERAL INFORMATION

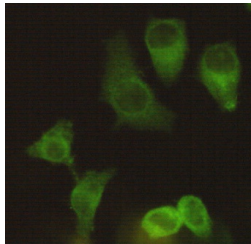
Product Type	Primary antibodies
Short Description	Mouse monoclonal antibody anti-Kinesin-Like Protein Kif11 is suitable for use in Western Blot, Immunoprecipitation and Immunocytochemistry research applications.
Applications	WB, IP, ICC
Host/Source	Mouse
Reactivity	Human

PRODUCT PROPERTIES

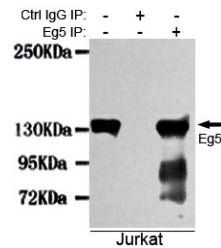
Clonality	Monoclonal
Clone ID	4H3-1F12
Concentration	1 mg/mL
Conjugation	Unconjugated
Purification	The antibody was isolated from ascitic fluid by immunoaffinity chromatography using antigens coupled to agarose beads.
Dilution Range	WB 1:1000 ICC 1:200
Formulation	PBS, 50% Glycerol, 0.5% BSA and 0.02% Sodium Azide.
Isotype	IgG1
Storage Instruction	Store at -20°C for up to 1 year from the date of receipt, and avoid repeat freeze-thaw cycles.

TARGET INFORMATION

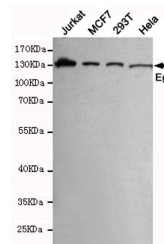
Gene ID	3832
Gene Symbol	KIF11
Uniprot ID	KIF11_HUMAN
Immunogen	Purified recombinant human Eg5 protein fragments expressed in E.coli.
Immunogen Region	
Specificity	KIF11 monoclonal antibody (Kinesin-Like Protein Kif11) binds to endogenous Kinesin-Like Protein Kif11.
Immunogen Sequence	



Immunocytochemistry staining of HeLa using Eg5 mouse mAb (1:200).



Immunoprecipitation analysis of Jurkat cell lysates using Eg5 mouse mAb.



Western blot detection of Eg5 in MCF7, 293T, Jurkat and HeLa cell lysates using Eg5 mouse mAb (1:1000 diluted). Predicted band size: 130 kDa. Observed band size: 130 kDa.

This product is suitable for in-vitro studies under the RESEARCH USE ONLY [RUO] licence. This product must not be used as for diagnostic or other medical purposes.
St John's Laboratory Ltd, Knowledge Dock Business Centre, University Way, London, E16 2RD | Tel: 0208 223 3081