

Anti-KDM1A antibody [1E5-H2] (STJ99025)

STJ99025

GENERAL INFORMATION

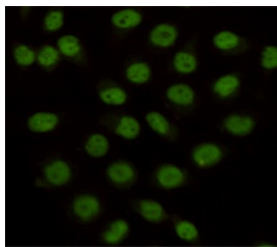
Product Type	Primary antibodies
Short Description	Mouse monoclonal antibody anti-Lysine-Specific Histone Demethylase 1a is suitable for use in Western Blot, Immunocytochemistry and Immunoprecipitation research applications.
Applications	WB, ICC, IP
Host/Source	Mouse
Reactivity	Human, Monkey

PRODUCT PROPERTIES

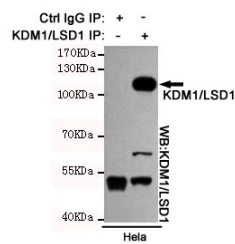
Clonality	Monoclonal
Clone ID	1E5-H2
Concentration	1 mg/mL
Conjugation	Unconjugated
Purification	The antibody was isolated from ascitic fluid by immunoaffinity chromatography using antigens coupled to agarose beads.
Dilution Range	WB 1:1000 ICC 1:100
Formulation	PBS, 50% Glycerol, 0.5% BSA and 0.02% Sodium Azide.
Isotype	IgG1
Storage	Store at -20°C for up to 1 year from the date of receipt, and avoid repeat freeze-thaw cycles.
Instruction	

TARGET INFORMATION

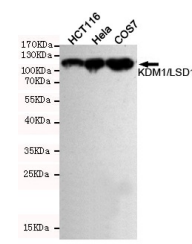
Gene ID	23028
Gene Symbol	KDM1A
Uniprot ID	KDM1A_HUMAN
Immunogen	Purified recombinant human KDM1/LSD1 protein fragments expressed in E.coli.
Immunogen Region	
Specificity	KDM1A monoclonal antibody (Lysine-Specific Histone Demethylase 1a) binds to endogenous Lysine-Specific Histone Demethylase 1a.
Immunogen Sequence	



Immunocytochemistry staining of HeLa cells fixed with 4% Paraformaldehyde and using anti-KDM1/LSD1 mouse mAb (dilution 1:100).



Immunoprecipitation analysis of HeLa cell lysates using KDM1/LSD1 mouse mAb.



Western blot detection of KDM1/LSD1 in HeLa, HCT116 and COS7 cell lysates using KDM1/LSD1 mouse mAb (1:1000 diluted). Predicted band size: 110kDa. Observed band size: 110kDa.

This product is suitable for in-vitro studies under the RESEARCH USE ONLY [RUO] licence. This product must not be used as for diagnostic or other medical purposes.
St John's Laboratory Ltd, Knowledge Dock Business Centre, University Way, London, E16 2RD | Tel: 0208 223 3081