

Anti-KDM5C antibody [2E4-E1-G8] (STJ99023)

STJ99023

GENERAL INFORMATION

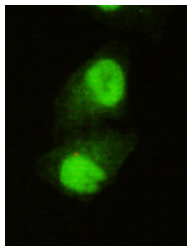
Product Type	Primary antibodies
Short Description	Mouse monoclonal antibody anti-Lysine-Specific Demethylase 5c is suitable for use in Western Blot and Immunocytochemistry research applications.
Applications	WB, ICC
Host/Source	Mouse
Reactivity	Human

PRODUCT PROPERTIES

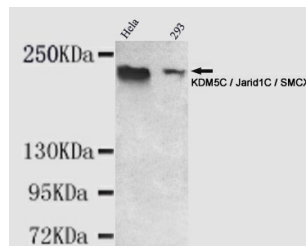
Clonality	Monoclonal
Clone ID	2E4-E1-G8
Concentration	1 mg/mL
Conjugation	Unconjugated
Purification	The antibody was isolated from ascitic fluid by immunoaffinity chromatography using antigens coupled to agarose beads.
Dilution Range	WB 1:1000 ICC 1:150
Formulation	PBS, 50% Glycerol, 0.5% BSA and 0.02% Sodium Azide.
Isotype	IgG2a
Storage	Store at -20°C for up to 1 year from the date of receipt, and avoid repeat freeze-thaw cycles.
Instruction	

TARGET INFORMATION

Gene ID	8242
Gene Symbol	KDM5C
Uniprot ID	KDM5C_HUMAN
Immunogen	Purified recombinant human KDM5C/Jarid1C/SMCX protein fragments expressed in E.coli
Immunogen Region	
Specificity	KDM5C monoclonal antibody (Lysine-Specific Demethylase 5c) binds to endogenous Lysine-Specific Demethylase 5c.
Immunogen Sequence	



Immunocytochemistry of HeLa cells using anti-KDM5C/Jarid1C/SMCX mouse mAb diluted 1:150.



Western blot detection of KDM5C/Jarid1C/SMCX in HeLa and 293 cell lysates using KDM5C/Jarid1C/SMCX mouse mAb (1:1000 diluted). Predicted band size: 176KDa. Observed band size: 220KDa.

This product is suitable for in-vitro studies under the RESEARCH USE ONLY [RUO] licence. This product must not be used as for diagnostic or other medical purposes.
St John's Laboratory Ltd, Knowledge Dock Business Centre, University Way, London, E16 2RD | Tel: 0208 223 3081